

# Geography & Land Use

### Section 3

## GEOGRAPHY & LAND USE

This section presents statistics on physical geography, water areas, climate, land use, value and ownership. Information on agriculture, forests and parks may be found in other sections of the book.

Maui County consists of four of the major eight islands in the State of Hawai'i: Maui, Moloka'i, Lāna'i and Kaho'olawe. The total land area of Maui County is 1,170.9 square miles with a general coastline of 210 statute miles. The highest peak in the county is on Haleakalā, Maui with its 10,023 foot summit at Pu'u 'ula'ula (Red Hill); the largest stream is Kalialinui-Wai'ale Gulch, Maui, 18 miles; the most extensive lake or similar body, Keālia Pond (Marsh), Maui, 500 acres and the highest waterfall (in the county and in the state) is Kahiwa, Moloka'i, a 1,750-foot cascade.

The climate of Maui County is defined by average temperatures ranging from 83.8 degrees in the warmest month at Kahului Airport, Maui, to 67.3 degrees in the coolest month. Rainfall varies greatly. Annual averages for rainfall in the county range from 80 inches in Hāna, to 25 inches in Moloka'i, to 29 inches at Kapalua-West Maui Airport, to a mere 15 inches in Kihei and South Maui.

The State Land Use Commission currently zones 30,060 acres in Maui County as urban, 311,601 as conservation, 400,913 as agricultural and 8,326 as rural.

The island of Kaho'olawe (28,800 acres) was transferred from the federal government to the State of Hawai'i in May, 1994.

Considerable caution is necessary in comparing statistics from different sources on land use and ownership. Variations in definitions and survey dates seriously affect comparability.

Sources important to these tables are the U.S. National Climatic Data Center, and The State of Hawai'i Data Book, published annually by the Department of Business, Economic Development and Tourism.

### 3.1.1

## LAND AND WATER AREA OF COUNTIES AND ISLANDS

County or Island	Square Miles			Acres <sup>1</sup>	
	Total	Land <sup>2</sup>	Inland Water <sup>3</sup>	Total	Land
<b>State Total</b>	<b>6468.2</b>	<b>6,422.63</b>	<b>45.6</b>	<b>4,139,667</b>	<b>4,110,483</b>
<b>Counties<sup>4</sup></b>					
Hawai'i	4029.4	4,028.42	1.0	2,578,829	2,578,189
Maui	1170.9	1,161.52	9.4	749,389	743,373
Kalawao	13.0	11.99	1.0	8,314	7,674
Honolulu <sup>5</sup>	624.9	600.74	24.2	399,962	384,474
Kaua'i <sup>5</sup>	630.0	619.96	10.0	403,174	396,774
<b>Islands<sup>4</sup></b>					
Hawai'i	4029.4	4,028.42	1.0	2,578,829	2,578,189
Maui	777.9	771.99	5.9	497,850	494,074
Molokini <sup>6</sup>	0.0	0.04	0.0	23	23
Kaho'olawe	45.5	44.60	0.9	29,120	28,544
Lāna'i	141.9	141.07	0.8	90,797	90,285
Moloka'i	263.3	260.46	2.8	168,486	166,694
O'ahu	621.6	597.64	24.0	397,850	382,490
Kaua'i	561.2	552.35	8.8	359,136	353,504
Ni'ihau	68.7	67.60	1.1	43,968	43,264
Lehua	0.4	0.44	0.0	284	284
Ka'ula	0.2	0.25	0.0	158	158

1. Areas in acres were calculated directly from the figures shown for square miles; these equivalents were independently rounded, and hence may not add exactly to the indicated totals and subtotals. One square mile = 640 acres.

2. Dry land and land temporarily or partially covered by water, as marshland, swamps, etc. streams and canals under one-eighth statute mile wide; and lakes, reservoirs, and ponds under 40 acres of area.

3. Permanent inland water surface, such as lakes, reservoirs, and ponds having 40 acres or more of area; streams, sloughs, estuaries, and canals one-eighth statute mile or more in width; deeply indented embayments and sounds, and other coastal waters behind or sheltered by headlands or islands separated by less than 1 nautical mile of water and islands having less than 40 acres of area.

4. Because of rounding, island figures may not add to county figures.

5. Reflect inclusion of Ka'ula in the County of Kaua'i rather than in the City and County of Honolulu (Act 245, S.L.H. 1988, approved June 9, 1988).

6. Molokini, offshore of Maui, not measured; other sources give the area of Molokini as 0.036 square miles.

SOURCE: U.S. CENSUS BUREAU, 2010 CENSUS REDISTRICTING DATA (P.L. 94-171) SUMMARY FILE (FEBRUARY 2011), AND CALCULATIONS BY THE HAWAII STATE DEPARTMENT OF BUSINESS, ECONOMIC DEVELOPMENT & TOURISM, OFFICE OF PLANNING, STATE OF HAWAII DATA BOOK 2014 AND THE HAWAII STATE DATA CENTER, AND UNPUBLISHED RECORDS.

### 3.1.2

## GENERAL COASTLINE AND TIDAL SHORELINE BY COUNTY AND ISLAND

	General Coastline <sup>1</sup>		Tidal Shoreline <sup>2</sup>	
	Statute Miles	Kilometers <sup>3</sup>	Statute Miles	Kilometers <sup>3</sup>
<b>State Total</b>	<b>750</b>	<b>1,207</b>	<b>1,052</b>	<b>1,693</b>
<b>Counties</b>				
Hawai'i	266	428	313	504
Maui and Kalawao	210	338	343	552
Honolulu	137	220	234	377
Kaua'i	137	220	162	261
<b>Islands<sup>4</sup></b>				
Hawai'i	266	428	313	504
Maui	120	193	149	240
Kaho'olawe	29	47	36	58
Lāna'i	47	76	52	84
Moloka'i	88	142	106	171
O'ahu	112	180	209	336
Kaua'i	90	145	110	177
Ni'ihau	45	72	50	80
Ka'ula	2	3	2	3
<b>Northwestern Hawaiian Islands<sup>5</sup></b>				
Nihoa	3	5	3	5
Necker Island	2	3	2	3
French Frigate Shoals	6	10	6	10
Laysan Island	6	10	6	10
Lisianski Island	3	5	3	5
Kure Atoll	5	8	5	8

1. Figures are lengths of general outline of seacoast. Data for the four islands of Maui County are not consistent with the reported county total.

2. Shoreline of outer coast, offshore islands, bays, rivers, and creeks is included to the head of tidewater or to a point where tidal waters narrow to a width of 100 feet.

3. Derived from data expressed in statute miles; independently rounded and accordingly may not add exactly to indicated totals and subtotals. 1 mi. = 1.609 km.

4. Data are not available for five minor islands: Molokini, Lehua, Gardner Pinnacles, Maro Reef, and Pearl and Hermes Atoll.

5. Excludes the Midway Islands, which are part of the Hawaiian Archipelago but not legally part of the State of Hawai'i. Midway has a general coastline of 20 miles and a tidal shoreline of 33 miles.

SOURCE: U.S. DEPARTMENT OF COMMERCE, NATIONAL OCEAN SURVEY, THE COASTLINE OF THE UNITED STATES (1975).

### 3.1.3

## MAJOR NAMED WATERFALLS MAUI COUNTY

Waterfall	Cascade Height (feet)	Horizontal Distance (feet)	Average Discharge (million gal/day)
<b>Maui</b>			
Honokōhau	1,120	500	26.6
Waihi'umalu	400	150	NA
Waimoku	40	50	37.1
<b>Moloka'i</b>			
Kahiwa	1,750	1,000	NA
Pāpalaua	1,200	500	NA
Wailele	500	150	NA
Hāloku	500	200	NA
Hīpuapua	500	300	NA
'Olo'upena	300	150	NA
Moa'ula	250	200	19.7

Note: Includes the largest named waterfalls in each island, either in height or average discharge; all other named falls 250 feet high or over; and well-known small falls. Many unnamed falls have sheer drops of 200 feet or more.

NA: Not available

SOURCE: U.S. GEOLOGICAL SURVEY, RECORDS; HAWAI'I STATE DEPARTMENT OF LAND AND NATURAL RESOURCES, DIVISION OF WATER AND LAND DEVELOPMENT, RECORDS, AND HAWAI'I STATE DEPARTMENT OF PLANNING AND ECONOMIC DEVELOPMENT, HAWAI'I, THE NATURAL ENVIRONMENT(1974), P.18.

### 3.1.4

## ELEVATIONS OF MAJOR SUMMITS

*Elevation of the highest point on each island and other important peaks*

Island and Summit		Feet	Meters
<b>Hawai'i</b>	Mauna Ke'a <sup>1</sup>	13,796	4,205
	Mauna Loa <sup>2</sup>	13,679	4,169
	Hualālai	8,271	2,521
	Ka'unu o Kaleihoochie	5,480	1,670
	Kīlauea (Uwēkahuna)	4,093	1,248
	Kīlauea (Halema'uma'u Rim)	3,660	1,116
<b>Kaho'olawe</b>	Pu'u 'O Moa'ula Nui	1,483	452
	Pu'u Moa'ula Iki	1,434	437
<b>Maui</b>	Haleakalā (Red Hill)	10,023	3,055
	Haleakalā (Ka'upō Gap)	8,201	2,500
	Pu'u Kukui	5,788	1,764
	'Īao Needle	2,250	686
<b>Lāna'i</b>	Lāna'ihale	3,366	1,026
<b>Moloka'i</b>	Kamakou	4,961	1,512
	Oloku'i	4,606	1,404
	Ka'unuohua	4,535	1,382
	Kalaupapa Lookout	1,600	488
	Mauna Loa (Kukui)	1,430	436
<b>O'ahu</b>	Ka'ala	4,003	1,220
	Pu'u Kalena	3,504	1,068
	Kōnahuanui	3,150	960
	Tantalus	2,013	614
	Olomana	1,643	501
	Koko Crater (Kohelepelepe)	1,208	368
	Nu'uuanu Pali Lookout	1,186	361
	Diamond Head	760	232
	Koko Head	642	196
Punchbowl	500	152	

## 3.1.4

## CONTINUED

Island and Summit		Feet	Meters
<b>Kaua'i</b>	Kawaikini	5,243	1,598
	Wai'ale'ale	5,148	1,569
	Nāmolokama Mountain	4,421	1,348
	Kalalau Lookout	4,120	1,256
	Hā'upu	2,297	700
	Sleeping Giant (Nounou)	1,241	378
<b>Ni'ihau</b>	Paniau	1,250	381
<b>Lehua</b>		699	213
<b>Ka'ula</b>		548	167
<b>Nihoa</b>	Millers Peak	903	275
<b>Necker Island</b>	Summit Hill	276	84
<b>French Frigate Shoal</b>	La Perouse Pinnacles	120	37
<b>Gardner Pinnacles</b>		190	58
<b>Maro Reef</b>		Awash	Awash
<b>Laysan Island</b>		40	12
<b>Lisianski Island</b>		40	12
<b>Pearl and Hermes Atoll</b>		10	3
<b>Midway Islands</b>		12	4
<b>Kure Atoll</b>		20	6

1. According to the 1995 Guinness Book of Records (p. 147), "The world's tallest mountain measured from its submarine base (3,280 fathoms) in the Hawaiian Trough to its peak is Mauna Kea... with a combined height of 33,480 ft., of which 13,796 ft. are above sea level."

2. Guinness (p. 142-143) describes Mauna Loa as having "dimensions, but not height, [which] exceed those of Mt. Everest... The axes of its elliptical base, 16,322 ft. below sea level, have been estimated at 74 miles and 53 miles."

SOURCE: HAWAII STATE DEPARTMENT OF ACCOUNTING AND GENERAL SERVICES, SURVEY DIVISION, DATA PROVIDED APRIL 21, 1992; U.S. NATIONAL CARTOGRAPHIC INFORMATION CENTER, DATA PROVIDED OCTOBER 11, 1978; U.S. GEOLOGICAL SURVEY TOPOGRAPHIC MAPS, 1981-1984; HAWAIIAN GOVERNMENT SURVEY (FOR NIHOA AND MOLOKINI); U.S.S. Tanager Survey, 1923 (FOR NECKER ISLAND, FRENCH FRIGATE SHOALS, LAYSAN, LISIANSKI, PEARL, HERMES ATOLL AND KURE ATOLL).

## 3.1.5

### MISCELLANEOUS GEOGRAPHIC STATISTICS BY ISLAND

	State	Hawai'i	Maui	Kaho'olawe	Lāna'i	Molokai	O'ahu	Kaua'i	Ni'ihau
Extreme Length (miles)	NA	93.0	48.0	11.0	18.0	38.0	44.0	33.0	8.0
Extreme Width (miles)	NA	76.0	26.0	6.0	13.0	10.0	30.0	25.0	6.0
Miles of Sea Cliffs with Heights of 1,000 Feet or More <sup>1</sup>	33.0	4.0	-	-	1.0	14.0	-	11.0	3.0
Miles from Coast of Most Remote Point	28.5	28.5	10.6	2.4	5.2	3.9	10.6	10.8	2.4
Percent of Area Within 5 Miles of Coast	48.6	30.0	76.1	100.0	100.0	100.0	79.0	65.0	100.0
Percent of Area with Elevation of Less than 500 Feet	20.8	12.0	24.9	38.9	24.8	37.3	45.3	35.6	78.2
Percent of Area with Elevation of 2,000 Feet or More	50.9	68.4	41.4	0.0	6.3	17.8	4.6	24.0	0.0
Approximate Mean Altitude (feet)	3,030.0	3,950.0	2,390.0	600.0	1,140.0	1,150.0	860.0	1,380.0	530.0
Percent of Area with Slope Less than 10%	63.5	76.0	38.5	60.0	61.0	53.0	42.5	33.5	68.0
Percent of Area with Slope 20% or more	17.0	4.0	36.0	9.0	16.0	26.0	45.5	50.5	12.5

1. According to Lee S. Motteier, Geography and Map Division, Bernice P. Bishop Museum, the sea cliffs along the northeastern coast of Molokai between Umilehi Point and Pu'uka'ōkū Point drop 3,250 feet at an average slope of 58 degrees. These cliffs have been described by The Guinness Book of World Records (1995 edition, p. 154) as "the highest sea cliffs in the world."

NA: Not applicable.

SOURCE: HAWAII STATE DEPARTMENT OF PLANNING AND ECONOMIC DEVELOPMENT, HAWAII, THE NATURAL ENVIRONMENT (1974), P. 19; AND U.S. GEOLOGICAL SURVEY, ELEVATIONS AND DISTANCES IN THE UNITED STATES (1978), P. 4-5.



3.1.6

**TEMPERATURE AND PRECIPITATION  
AVERAGES AND EXTREMES, MAUI COUNTY**

<b>TEMPERATURE</b>		<b>Period of Record</b>	<b>Elevation (feet)</b>	<b>Annual Average</b>		<b>Warmest Month</b>		<b>Coolest Month</b>		<b>Record High</b>		<b>Record Low</b>	
<b>Station</b>				<b>High</b>	<b>Low</b>	<b>High</b>	<b>Low</b>	<b>High</b>	<b>Low</b>	<b>°F</b>	<b>Date</b>	<b>°F</b>	<b>Date</b>
Haleakalā Ranger Station		1949-2012	7,030	62.7	44.8	66.1	47.7	59.1	41.5	80	7/25/1953	27	2/26/1965
Hāna Airport		1950-2012	70	80.8	67.4	83.6	69.8	78.2	63.9	94	11/3/1979	50	1/9/1953
Kahului Airport		1954-2012	50	83.8	67.3	87.5	70.2	80.2	63.2	97	8/31/1994	48	1/20/1969
Kailua (NE Maui, Inland)		1949-2012	700	76.2	63.5	79.0	65.8	73.9	60.5	88	9/18/1968	44	3/16/2009
Kapalua Airport		1987-2012	240	81.9	69.1	85.6	71.9	78.2	66.0	98	4/20/2005	58	12/18/1988
Molokaʻi Airport		1957-2012	450	81.4	67.6	85.4	71.0	77.4	63.1	96	4/14/1974	46	3/4/1987
Lānaʻi Airport		1949-2012	1,300	79.3	62.7	82.7	65.8	75.8	59.2	93	7/2/2004	46	1/22/1955
Lānaʻi City		1949-2012	1,620	75.4	62.4	78.5	65.1	72.5	59.5	92	10/20/2006	47	2/22/1973

<b>PRECIPITATION</b>		<b>Annual Avg Inches</b>	<b>Days Precip ≥ 0.01 in.</b>	<b>Wettest Year</b>		<b>Driest Year</b>		<b>Wettest Month</b>		<b>Driest Month</b>		<b>1 Day Record</b>	
<b>Station</b>				<b>Inches</b>	<b>Year</b>	<b>Inches</b>	<b>Year</b>	<b>Inches</b>	<b>Month</b>	<b>Inches</b>	<b>Month</b>	<b>Inches</b>	<b>Date</b>
Haleakalā Ranger Station		51.28	140	121.16	1980	17.71	1962	8.15	Jan	1.18	Jun	18.50	1/9/1980
Hāna Airport		80.48	267	126.23	1965	49.64	1953	9.52	Mar	4.08	Jun	17.57	4/16/1968
Kahului Airport		18.23	95	40.63	1989	6.76	1998	3.51	Jan	0.22	Jun	5.82	12/21/1955
Kailua (NE Maui, Inland)		118.50	265	161.82	1969	79.20	1953	12.81	Mar	6.75	Jun	15.20	11/15/1965
Kapalua Airport		28.62	157	48.43	2004	18.92	2000	4.54	Dec	1.00	Sept	8.14	3/24/2006
Molokaʻi Airport		24.96	104	43.70	1963	11.06	2001	4.44	Jan	0.52	Jun	9.03	2/12/1989
Lānaʻi Airport		18.82	58	47.66	1951	5.28	1999	3.29	Dec	0.50	Aug	10.45	11/10/1955
Lānaʻi City		34.29	111	66.87	1968	15.64	1999	5.25	Jan	1.27	Jun	11.25	11/10/1955

SOURCE: U.S. DEPARTMENT OF COMMERCE, NATIONAL OCEANIC AND ATMOSPHERIC ADMINISTRATION, WESTERN REGIONAL CLIMATE CENTER, HAWAII CLIMATE SUMMARIES.

3.1.7

**MONTHLY RAINFALL AND TEMPERATURE AT SPECIFIED LOCATIONS  
MAUI COUNTY, 2015**

Rainfall	Jan	Feb	Mar	Apr	May	June	July	Aug	Sept	Oct	Nov	Dec	Annual
<b>Maui</b>													
Haleakalā Ranger Station	6.10	4.07	4.08	9.08	2.02	2.78	2.41	11.65	2.64	6.87	8.31	4.77	64.78
Hāna Airport	4.47	3.66	10.49	5.02	5.81	3.40	5.66	4.84	6.11	8.45	9.21	4.13	71.25
Kahului Airport	1.31	3.19	9.61	2.81	2.23	0.10	0.83	2.32	0.37	1.35	4.41	0.73	29.26
Kailua (NE Maui)	11.38	5.68	19.27	6.99	8.84	6.36	7.31	12.13	13.69	10.15	10.04	1.58	113.42
Kapalua Airport	2.63	1.59	4.77	3.56	4.02	1.12	1.34	2.78	1.19	3.23	4.71	2.05	32.99
Kīhei	1.42	2.05	3.30	2.51	NA	0.00	0.19	1.89	0.00	0.59	2.21	0.06	14.22
Kula Branch Station	4.12	5.76	1.62	1.32	1.11	1.27	3.29	7.03	7.09	4.01	3.18	0.06	39.86
‘Ohe‘o	1.46	5.71	5.14	7.71	5.83	6.87	6.08	11.17	10.13	5.23	10.02	6.54	81.89
Pā‘ia	2.90	1.38	5.71	4.95	NA	0.62	1.26	3.31	1.62	4.01	6.37	2.58	34.71
‘Ulupalakua Ranch	2.87	5.62	3.34	1.58	1.83	6.75	4.50	6.15	4.68	1.61	3.66	0.17	42.76
Waihe‘e	4.89	5.83	11.94	5.86	4.09	NA	3.93	6.07	4.90	7.76	6.24	2.21	63.72
<b>Moloka‘i</b>													
Maunaloa	1.81	1.96	2.91	0.48	1.17	0.60	0.98	7.66	4.05	1.90	2.93	0.56	27.01
Moloka‘i Airport	1.38	2.38	4.04	1.20	0.91	0.42	0.29	6.30	1.02	1.18	2.53	0.86	22.51
Kaunakakai	0.91	0.81	1.15	0.11	0.45	0.00	0.10	4.92	3.68	0.25	1.44	0.08	13.90

3.1.7

CONTINUED

Temperature <sup>1</sup>	Jan	Feb	Mar	Apr	May	June	July	Aug	Sept	Oct	Nov	Dec	Annual
<b>Maui</b>													
Haleakalā Ranger Station	NA	52.7	49.5	52.8	51.7	55.2	59.5	59.7	58.7	56.4	56.2	53.5	55.1
Hāna Airport	70.9	71.9	71.1	74.9	73.2	75.7	78.5	79.6	79.4	77.4	77.1	74.9	75.4
Kahului Airport	70.9	72.7	72.4	76.5	75.9	78.6	81.7	82.3	82.2	79.0	78.5	74.9	77.1
Kailua (NE Maui)	66.9	69.1	66.9	69.6	68.9	71.5	74.5	75.4	74.8	72.4	71.8	69.9	71.0
Kapalua Airport	71.6	73.3	71.7	75.5	74.4	78.2	81.4	82.2	82.1	79.3	77.8	75.1	76.9
Kula Branch Station	59.4	61.4	60.2	63.6	62.6	65.3	67.9	69.9	69.2	67.4	66.1	62.7	64.6
<b>Molokaʻi</b>													
Molokaʻi Airport	68.5	70.3	69.8	74.1	73.9	77.3	79.7	80.6	79.7	77.4	77.1	74.3	75.2

1. Average temperature for the month.  
NA: Not available

SOURCE: U.S. DEPARTMENT OF COMMERCE, NATIONAL OCEANIC AND ATMOSPHERIC ADMINISTRATION, WESTERN REGIONAL CLIMATE CENTER, HAWAII CLIMATE SUMMARIES.

### 3.1.8

## ANNUAL RAINFALL AND TEMPERATURE AT SPECIFIED LOCATIONS, MAUI COUNTY

Annual Rainfall, Inches					
	2011	2012	2013	2014	2015
<b>Maui</b>					
Haleakalā Ranger Station	33.18	13.37	NA	13.29	33.09
Hāna Airport	7.36	14.18	56.76	76.85	71.25
Kahului Airport	10.59	5.04	15.41	23.25	29.26
Kailua (NE Maui)	22.40	17.02	NA	21.65	NA
Kapalua Airport	23.82	19.07	18.84	36.06	32.99
Kīhei	7.42	2.17	6.76	17.97	14.22
Kula Branch Station	19.71	11.34	22.16	39.26	39.86
‘Ohe‘o	67.26	63.81	52.09	70.42	68.10
Pā‘ia	31.08	20.03	29.06	36.18	34.71
‘Ulupalakua Ranch	20.01	8.12	20.20	36.82	30.84
Waihe‘e	83.15	54.90	89.03	81.88	87.70
<b>Moloka‘i</b>					
Maunaloa	NA	1.75	1.42	16.95	14.88
Moloka‘i Airport	10.05	7.15	18.91	40.38	22.51
Kaunakakai	7.97	4.02	15.08	19.59	13.90
Average Annual Temperature, Fahrenheit					
	2011	2012	2013	2014	2015
<b>Maui</b>					
Haleakalā Ranger Station	54.1	50.5	NA	NA	51.7
Hāna Airport	NA	74.6	74.2	74.9	75.4
Kahului Airport	75.6	75.5	76.5	77.0	77.2
Kapalua Airport	75.1	75.8	78.2	76.7	77.0
Kula Branch Station	63.4	63.0	63.5	64.1	64.7
‘Ohe‘o	74.8	74.2	75.5	75.5	73.9
Waihe‘e	74.3	74.4	74.2	74.4	74.8
<b>Moloka‘i</b>					
Moloka‘i Airport	74.7	74.8	74.2	74.9	75.2

NA: Not available.

SOURCE: U.S. DEPT. OF COMMERCE, NATIONAL OCEANIC AND ATMOSPHERIC ADMINISTRATION, NATIONAL CLIMATIC DATA CENTER.

### 3.2.1

## TRENDS IN REAL PROPERTY TAX BASE MAUI COUNTY

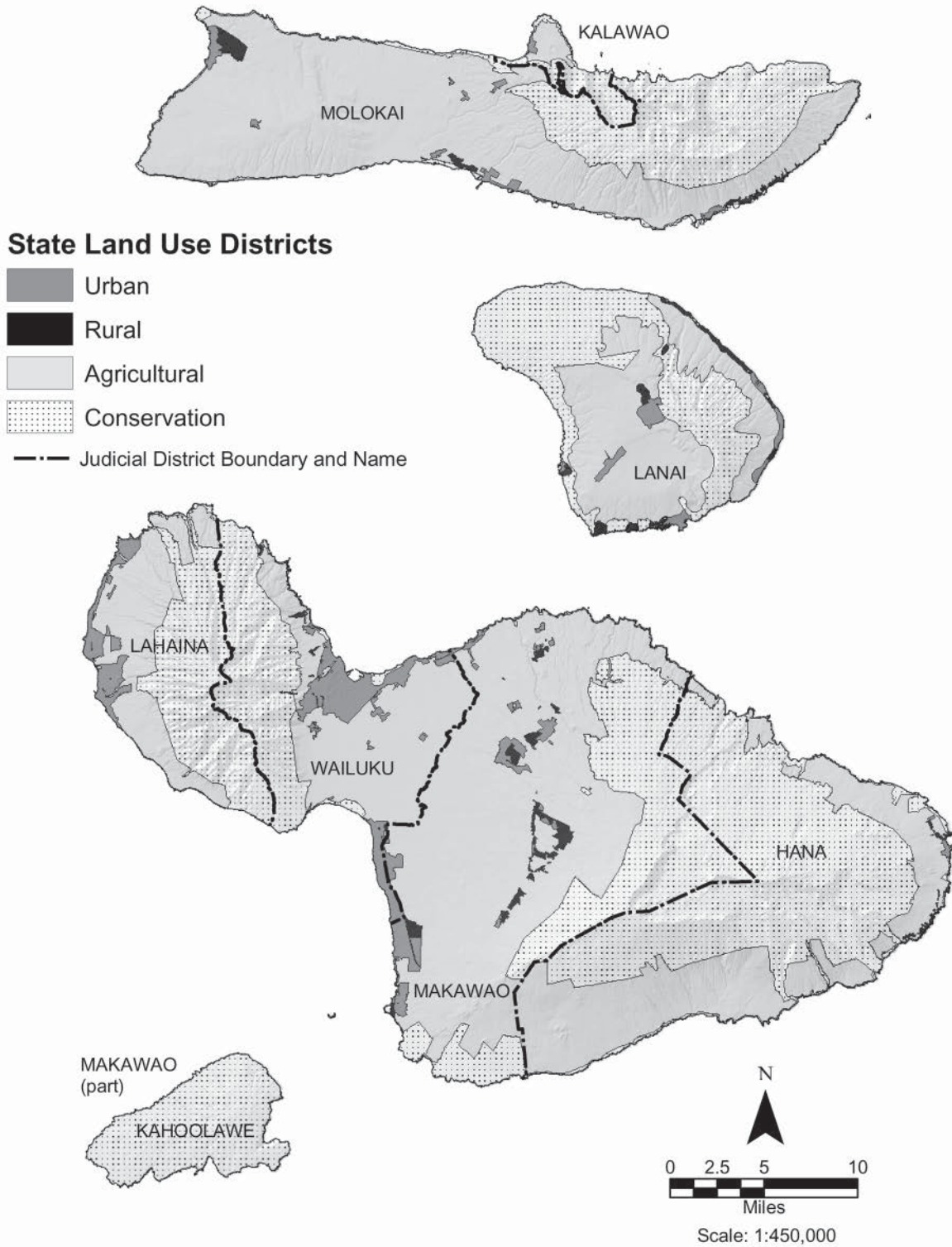
*Gross valuation in thousands  
As of mid-April*

	2010	2011	2012	2013	2014	2015
<b>Residential</b>	6,648,101	6,111,342	5,661,777	5,893,266	6,028,645	6,711,804
Land	4,538,591	4,000,496	3,503,854	3,601,197	3,686,699	4,070,656
Improvements	2,109,510	2,110,846	2,157,923	2,292,069	2,341,946	2,641,148
<b>Apartment</b>	5,803,389	5,183,099	4,734,126	4,916,549	5,234,865	5,946,767
Land	1,900,081	1,756,162	1,491,850	1,623,663	1,726,925	1,848,829
Improvements	3,903,308	3,426,937	3,242,276	3,292,887	3,507,941	4,097,938
<b>Commercial</b>	2,377,233	2,369,348	2,090,675	2,118,943	2,172,533	3,181,514
Land	1,466,493	1,464,329	1,183,383	1,196,976	1,222,050	2,043,733
Improvements	910,740	905,019	907,292	921,968	950,483	1,137,781
<b>Industrial</b>	1,744,516	1,562,690	1,617,626	1,793,130	1,628,188	1,869,580
Land	1,039,239	894,229	959,813	1,115,918	919,840	1,100,212
Improvements	705,277	668,461	657,813	677,213	708,349	769,368
<b>Agricultural</b>	3,627,326	3,138,433	3,134,209	3,401,327	3,515,172	3,762,908
Land	2,576,126	2,110,435	1,998,325	2,089,824	2,151,407	2,241,518
Improvements	1,051,200	1,027,998	1,135,884	1,311,504	1,363,765	1,521,390
<b>Conservation</b>	475,342	426,878	406,382	500,531	471,161	490,533
Land	335,975	297,308	281,471	295,211	281,645	285,855
Improvements	139,367	129,570	124,911	205,320	189,516	204,678
<b>Hotel/Resort</b>	856,7983	7,535,906	7,374,930	7,404,724	8,884,090	9,378,253
Land	2,325,263	1,820,070	1,434,536	1,450,145	1,783,169	1,858,055
Improvements	6,242,720	5,715,836	5,940,394	5,954,578	7,100,922	7,520,198
<b>Homeowner</b>	15,422,085	13,523,899	12,111,365	12,172,724	12,911,672	14,318,802
Land	8,424,063	6,859,815	5,530,653	5,529,016	5,988,415	6,645,531
Improvements	6,998,022	6,664,084	6,580,712	6,643,709	6,923,257	7,673,272
<b>Time Share</b>	2,138,057	1,627,652	1,510,939	1,484,089	1,595,127	1,773,726
Land	348,275	205,659	173,172	169,889	191,541	202,790
Improvements	1,789,782	1,421,993	1,337,767	1,314,201	1,403,586	1,570,936
<b>Commercialized Residential</b>	73,823	70,464	75,248	94,183	109,353	120,166
Land	43,367	36,416	31,778	41,861	57,361	58,698
Improvements	30,456	34,048	43,470	52,323	51,992	61,469
<b>Total</b>	<b>46,877,855</b>	<b>41,549,711</b>	<b>38,717,277</b>	<b>39,779,467</b>	<b>42,550,806</b>	<b>47,554,054</b>

SOURCE: CITY AND COUNTY OF HONOLULU, DEPARTMENT OF BUDGET AND FISCAL SERVICES, REAL PROPERTY ASSESSMENT DIVISION.

3.2.2

LAND USE DISTRICTS, MAUI COUNTY



SOURCE: HAWAII STATE OFFICE OF PLANNING, HAWAII STATEWIDE GIS PROGRAM, APRIL 2013.

### 3.2.3

## ESTIMATED ACREAGE OF LAND USE DISTRICTS BY ISLAND, 2014

*Total acreage, including inland water, as classified by the Hawai'i State Land Use Commission under the provisions of Chapter 205, Hawai'i Revised Statutes, as amended; all data are approximate*

Island	Classification by State Land Use Commission <sup>2</sup>				
	Total Area <sup>1</sup>	Urban	Conservation	Agricultural	Rural
Hawai'i <sup>3</sup>	2,573,400	54,145	1,304,347	1,212,886	2,023
Maui	465,800	24,191	194,836	242,720	4,053
Lāna'i	90,500	3,330	38,197	46,566	2,407
Moloka'i	165,800	2,539	49,768	111,627	1,866
Kaho'olawe	28,800	0	28,800	0	0
O'ahu	386,188	101,661	156,829	127,698	0
Kaua'i <sup>4</sup>	353,900	14,573	198,769	139,305	1,253
Ni'ihau <sup>4</sup>	45,700	0	0	45,700	0
Ka'ula and Lehua	400	0	400	0	0
Other islands <sup>5</sup>	1,900	0	1,900	0	0
<b>State Total</b>	<b>4,112,388</b>	<b>200,439</b>	<b>1,973,846</b>	<b>1,926,502</b>	<b>11,602</b>

1. These totals differ somewhat from the official figures based on measurements by the Geography Division of the U.S. Bureau of the Census, cited in Section 5.

2. For definitions, see Hawai'i Revised Statutes, Section 205-2.

3. County records update indicated 5 acres changed from Agricultural to Urban.

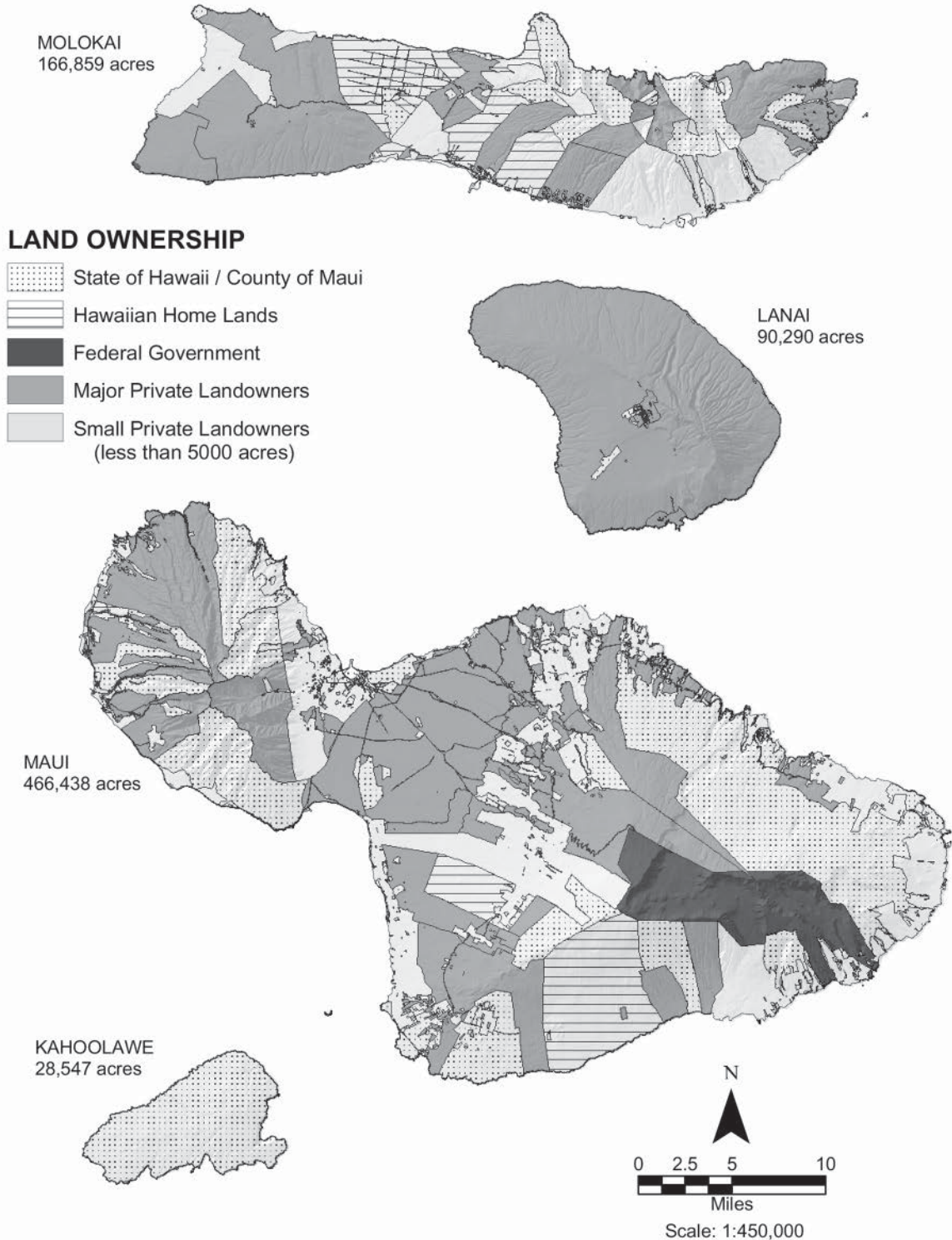
4. May be revised, pending updates of County records.

5. The Northwestern Hawaiian Islands, from Nihoa to Kure Atoll, excluding Midway.

SOURCE: HAWAII STATE DEPARTMENT OF BUSINESS, ECONOMIC DEVELOPMENT AND TOURISM, LAND USE COMMISSION, RECORDS.

### 3.2.4

## LAND OWNERSHIP, MAUI COUNTY



SOURCE: HAWAII'S STATE OFFICE OF PLANNING, HAWAII'S STATEWIDE GIS PROGRAM, AUGUST 2013.



### 3.2.5

## NUMBER OF LAND RECORDS BY COUNTY

*For fiscal year ending June 30*

Year	Maui	Hawai'i	Honolulu	Kaua'i	State Total
1995	56,726	129,856	242,285	27,136	456,003
1996	57,665	130,623	246,933	27,916	463,137
1997	58,624	131,981	251,731	28,876	471,212
1998	59,505	132,605	253,886	29,126	475,122
1999	60,490	133,322	255,589	29,336	478,737
2000	61,897	134,308	258,121	29,553	483,879
2001	62,873	135,499	259,456	29,818	487,646
2002	NA	NA	260,662	30,097	NA
2003	60,472	133,321	252,435	28,432	474,660
2004	60,537	134,290	255,029	28,772	478,628
2005	61,273	134,021	258,415	28,936	482,645
2006	62,521	134,885	262,479	29,423	489,308
2007	64,597	136,612	268,441	30,831	500,481
2008	65,938	138,281	271,859	31,822	507,900
2009	67,981	139,167	274,483	32,398	514,029
2010	68,930	139,649	276,582	32,870	518,031
2011	70,365	139,883	277,581	32,993	520,822
2012	71,101	140,008	278,825	34,023	523,957
2013	71,234	140,196	279,754	34,172	525,356
2014	71,515	140,257	281,463	34,124	527,359
2015	71,907	140,336	285,092	33,370	530,705

NA: Not available

SOURCE: CITY AND COUNTY OF HONOLULU, DEPARTMENT OF BUDGET & FISCAL SERVICES, REAL PROPERTY ASSESSMENT DIVISION.

### 3.2.6

## NATIONAL AND STATE HISTORIC PLACES MAUI COUNTY

---

### Island of Maui

'Alae Petroglyphs	Kamaole House Site
Alena Habitation Site	Kauhiale Complex
Asa Baldwin Residence	Kaupō School
Bank of Hawaii- Ha'ikū Branch	Ka'umi'umiua Heiau
Cave of Seven Coffins	Kearae School
Chee Kung Tong Society Hall	Keone'ō'io Archaeological Dist.
Crater Historic District	Ket Hing Society Hall
Frank Baldwin/H.F. Rice Res.	Kilolani Congregational Church
Fred C. Baldwin Memorial Home	King Kamehameha III's Royal Residential Complex
Gomes Residence	Kīpahulu Historic District
H. Perrine Baldwin High School	Kīpapa Archaeological District
Haiku Fruit & Packing Co. Manager's House	Kula Sanitorium
Haiku Mill	Lahaina Historic District
Hale Hō'ike'ike	Lo'alo'a Heiau
Hale Pa'i	Luala'ilua Cave
Haleki'i-Pihana Heiau	Luala'ilua Heiau
Hale o Lono Heiau	Luala'ilua Terrace Complex
Hāmoa Complex	Lucy Kaiewe Searle Residence
Hāna Belt Road	Ma'alaea General Store
Hāna Hongwanji Temple	Makawao Union Church
Hāna Police Station & Courthouse	Maui Jinsha Mission
Hāna Store	Moku'ula
Hanamau'uloa Complex	Molohai Heiau
Hardy House	Naniloa Drive Overpass Bridge
Holy Ghost Catholic Church	Old Bailey House
Honokalani Village	Pā'ia Mantokuji Soto Mission
Honokowai Petroglyphs	Pā'ia School
Īao Theater	Papakea Heiau
Ka'ahumanu Church	Papakea Petroglyphs
Kahikinui House	Pi'ilanihale Heiau
Kaiapuni Ko'a	Pioneer Mill Company Office
Kaimupe'elua Heiau	Pu'unēnē School
Kalepolepo Fishpond	Wahene Platform
Kaluakakalioa Cave	Wai'ale Bridge
Kaluanui Heiau Complex	Waihe'e Church

### 3.2.6

## CONTINUED

---

### Island of Maui (Continued)

Waikapū Stone Church

Wailuku Civic Center District

Wailuku School

Wānanalua Congr. Church

William K. Kaluakini Residence

Wo Hing Society Hall

### Island of Kahoʻolawe

Kahoʻolawe Archaeological Dist.

### Island of Lānaʻi

Keāliakapu Complex-Kaunolu Village Site

Puʻu Pehe Platform

### Island of Molokaʻi

Ahahui Kalanianaʻole

ʻAhina Heiau

Aliʻi Pond

Anahaki Gulch Complex

Ananaluwahine Cave

California Packing Corp.'s Plantation Manager's Res.

Fishing shrine at Keawa Ka Lani

### FISHPONDS

Halemahana Fishpond

Honouliwai Fishtrap

Ipukaiole Fishpond

Kahinapōhaku Fishpond

Kainalu Fishpond

Kaluaʻaha Fishpond

Kipapa Fishpond

Kolokoʻeli Fishpond

Mahilika Fishpond

Mikiawa Fishpond

Pahiomu Fishpond

Panahana Fishpond

Waiakea Fishpond

Weheleauʻulu Fishpond

Hökūkano ʻUalapuʻe Complex

ʻIliʻiliʻōpae Heiau

Kahokukano Heiau

Kalauonākukui Heiau

Kaluakapiʻioho Heiau

Keawanui Fishpond

Kukui Heiau

Pākuʻi Heiau

Puʻuʻōlelo Heiau

ʻUalapuʻe Fishpond

Kahili Koa

Kalaupapa Leprosy Settlement

Kaluaʻaha Church

Kalualohe Complex

Kapeʻelua Complex

Kapukikani Heiau

Kaupikiawa Cave

Kawela archeological sites

Keawakalae Koʻa

Kilohana School

Luahine Maika (Bowling) Run

Molokaʻi Public Library

Nanahoa Complex

Nihoa Complex

R. W. Meyer Sugar Mill

Sandalwood Pit

Southwest Molokaʻi Archeological District

St. Joseph Catholic Church

U.S. Coast Guard Molokaʻi Light

---

SOURCE: HAWAII STATE DEPARTMENT OF LAND AND NATURAL RESOURCES, STATE HISTORIC PRESERVATION DIVISION.

### 3.2.7

## DEPARTMENT OF HAWAIIAN HOME LANDS ACREAGE, LESSEES, AND APPLICANTS BY ISLAND

*The Department of Hawaiian Home Lands administers land set aside for the benefit of qualified Native Hawaiians, who receive homestead leases and financial assistance from the Department*

June 30, 2014	Maui	Lānaʻi	Molokaʻi	Hawaiʻi	Kauaʻi	Oʻahu	State Total
<b>Acreage</b>							
Homestead Leases	NA	NA	NA	NA	NA	NA	NA
General Leases	2	0	1,764	741	98	234	2,839
Licenses	7,110	0	350	16,470	84	309	24,322
Others	6,351	25	9,982	19,122	1,184	1,853	38,517
<b>Homestead Leases</b>							
Residential	1,276	29	394	1,707	700	4,223	8,329
Agricultural	65	0	423	506	46	61	1,101
Pastoral	75	0	27	305	1	0	408
<b>Applications</b>							
Residential	3,686	72	763	5,718	1,616	10,480	22,335
Agricultural	4,562	0	1,055	7,039	2,206	3,575	18,437
Pastoral	590	0	195	1,929	309	0	3,023

NA: Not available

SOURCE: HAWAIIʻI STATE DEPARTMENT OF HAWAIIAN HOMELANDS, ANNUAL REPORTS AND RECORDS.

3.2.8

**DISPOSITION OF STATE LANDS  
MAUI COUNTY, 2015**

<b>Document Number</b>	<b>Permittee or Grantee Name</b>	<b>Location</b>	<b>Acres</b>	<b>Use</b>	<b>Payment</b>
<b>Revocable Permits</b>					
RP7863	Kaupo Community Association	Hāna	2.21	Landscaping	480
RP7864	John Coston and Gloria Coston	Wailuku	0.26	Agriculture	624
<b>General Leases &amp; Term Easements</b>					
GL6018	Alan Battersby and Lisena Quintiliani	Wailuku	0.046	Seawall	65,500
GL6079	AOAO of Leilani Kai	Wailuku	0.013	Pool and pool deck	51,900
GL6084	Snowed Inn Hostelry Inc	Lahaina	0.077	Seawall, stairs and filled area	170,000

SOURCE: STATE OF HAWAII, DEPARTMENT OF LAND AND NATURAL RESOURCES.

## 3.2.9

## SINGLE FAMILY HOME AND CONDOMINIUM SALES BY AREA, MAUI COUNTY, 2015

Area	# Sales	% Change Last Yr	Avg. Price	% Change Last Yr	Median Price	% Change Last Yr	Total Volume	% Change Last Yr
<b><u>Single Family Homes</u></b>								
Central	400	33%	\$522,015	8%	\$507,286	14%	\$208,805,989	43%
Ha'ikū	81	11%	\$950,396	34%	\$700,000	8%	\$76,982,084	49%
Hāna	8	167%	\$901,613	110%	\$594,000	62%	\$7,212,900	461%
Kā'anapali	22	-19%	\$2,043,636	15%	\$1,785,000	12%	\$44,959,999	-7%
Kahakuloa	1	NA	\$656,000	NA	\$656,000	NA	\$656,000	NA
Kapalua	10	43%	\$3,005,000	-13%	\$2,848,000	-12%	\$30,050,000	24%
Kīhei	147	-5%	\$865,772	10%	\$600,000	0%	\$127,268,421	5%
Kipahulu	1	-50%	\$1,795,000	44%	\$1,795,000	44%	\$1,795,000	-28%
Kula/Ulupalakua/Kanaio	97	31%	\$933,087	6%	\$725,000	-8%	\$90,509,394	40%
Lahaina	51	-4%	\$1,133,269	-2%	\$700,000	-10%	\$57,796,730	-6%
Lāna'i	14	-22%	\$558,500	-40%	\$375,000	-19%	\$7,819,000	-54%
Makawao/Olinda/Hali'imaile	58	7%	\$658,790	14%	\$529,500	12%	\$38,209,847	22%
Maui Meadows	21	5%	\$1,187,471	-20%	\$1,025,000	-4%	\$24,936,888	-16%
Moloka'i	23	109%	\$453,232	77%	\$252,000	13%	\$10,424,330	269%
Nāhiku	3	200%	\$390,833	68%	\$367,500	58%	\$1,172,500	403%
Nāpili/Kahana/Honokōwai	30	-12%	\$867,793	-25%	\$881,000	17%	\$26,033,775	-34%
Olowalu	3	50%	\$1,168,333	-67%	\$1,475,000	-59%	\$3,505,000	-51%
Pukalani	69	28%	\$678,977	7%	\$624,000	8%	\$46,849,400	37%
Spreckelsville/Pā'ia/Ku'au	23	0%	\$892,478	-53%	\$610,000	-30%	\$20,527,000	-53%
Wailea/Mākena	27	-16%	\$3,930,833	27%	\$1,900,000	0%	\$106,132,500	7%
<b>Maui Summary</b>	<b>1,089</b>	<b>15%</b>	<b>\$855,507</b>	<b>-2%</b>	<b>\$580,000</b>	<b>2%</b>	<b>\$931,646,757</b>	<b>13%</b>
<b><u>Condominiums</u></b>								
Central	131	-20%	\$320,139	11%	\$315,000	13%	\$41,938,150	-11%
Ha'ikū	0	-100%	\$0	-100%	\$0	-100%	\$0	-100%
Hāna	0	-100%	\$0	-100%	\$0	-100%	\$0	-100%
Kā'anapali	102	-32%	\$1,261,621	11%	\$992,500	17%	\$128,685,375	-25%
Kapalua	42	20%	\$1,913,665	-16%	\$1,029,444	-14%	\$80,373,936	0%
Kīhei	444	7%	\$403,461	0%	\$343,250	7%	\$179,136,738	7%
Lahaina	103	43%	\$466,697	4%	\$440,000	5%	\$48,069,785	48%
Lāna'i	3	-50%	\$1,308,000	-28%	\$1,800,000	4%	\$3,924,000	-64%
Mā'alaea	43	19%	\$362,363	-19%	\$340,000	-12%	\$15,581,625	-4%
Moloka'i	17	13%	\$100,147	-12%	\$92,000	-3%	\$1,702,500	0%
Nāpili/Kahana/Honokōwai	197	-6%	\$443,811	4%	\$400,000	0%	\$87,430,833	-2%
Pukalani	4	100%	\$533,500	6%	\$497,000	-1%	\$2,134,000	112%
Spreckelsville/Pā'ia/Ku'au	2	-50%	\$1,014,250	10%	\$1,014,250	250%	\$2,028,500	-45%
Wailea/Mākena	111	21%	\$1,556,762	8%	\$1,026,880	1%	\$172,800,629	30%
<b>Maui Summary</b>	<b>1,199</b>	<b>0%</b>	<b>\$637,036</b>	<b>1%</b>	<b>\$410,000</b>	<b>-1%</b>	<b>\$763,806,071</b>	<b>1%</b>

NA: Not available

SOURCE: REALTORS ASSOCIATION OF MAUI, MLS SALE DATA, DECEMBER 2015.

### 3.2.10

## LAND SALES BY AREA, MAUI COUNTY, 2015

Area	# Sales	% Change Last Yr	Avg. Price	% Change Last Yr	Median Price	% Change Last Yr	Total Volume	% Change Last Yr
Central	26	0%	\$422,952	21%	\$263,000	-5%	\$10,996,741	21%
Ha'ikū	22	16%	\$556,991	-19%	\$417,500	-17%	\$12,253,800	-7%
Hāna	5	-50%	\$257,800	-68%	\$300,000	-18%	\$1,289,000	-84%
Honokohau	1	NA	\$300,000	NA	\$300,000	NA	\$300,000	NA
Kā'anapali	14	-48%	\$669,911	-37%	\$642,500	5%	\$9,378,750	-67%
Kahakuloa	1	-50%	\$377,000	-61%	\$377,000	-61%	\$377,000	-81%
Kapalua	2	-33%	\$2,950,000	42%	\$2,950,000	16%	\$5,900,000	-5%
Kaupo	1	NA	\$468,000	NA	\$468,000	NA	\$468,000	NA
Kearae	0	-100%	\$0	-100%	\$0	-100%	\$0	-100%
Kīhei	15	7%	\$509,767	22%	\$450,000	39%	\$7,646,500	31%
Kula/Ulupalakua/ Kanaio	19	27%	\$537,961	-1%	\$550,000	-15%	\$10,221,250	25%
Lahaina	10	-17%	\$617,200	-34%	\$508,500	-28%	\$6,172,000	-45%
Lāna'i	3	NA	\$563,333	NA	\$350,000	NA	\$1,690,000	NA
Makawao/ Olinda/Hali'imaile	5	-55%	\$714,000	26%	\$285,000	-19%	\$3,570,000	-43%
Maui Meadows	1	-50%	\$625,000	30%	\$625,000	30%	\$625,000	-35%
Moloka'i	11	120%	\$89,136	-12%	\$56,000	-54%	\$980,500	94%
Nāhiku	0	-100%	\$0	-100%	\$0	-100%	\$0	-100%
Nāpili/Kahana/ Honokōwai	1	-67%	\$975,000	40%	\$975,000	34%	\$975,000	-53%
Olowalu	2	0%	\$875,000	16%	\$875,000	16%	\$1,750,000	16%
Pukalani	3	0%	\$818,333	182%	\$550,000	139%	\$2,455,000	182%
Spreckelsville/ Pā'ia/Ku'au	0	-100%	\$0	-100%	\$0	-100%	\$0	-100%
Wailea/Mākena	12	71%	\$4,942,083	218%	\$4,630,000	199%	\$59,305,000	445%
<b>Maui Summary</b>	<b>154</b>	<b>-7%</b>	<b>\$885,413</b>	<b>23%</b>	<b>\$447,650</b>	<b>-14%</b>	<b>\$136,353,541</b>	<b>14%</b>

NA: Not available

SOURCE: REALTORS ASSOCIATION OF MAUI, MLS SALE DATA, DECEMBER 2015.

### 3.2.11

## FOREST AND NATURAL AREA ACREAGE BY ISLAND

*On June 30, 2014*

Island	Conservation District Forest Land		Natural Areas	
	Forest Reserve <sup>1</sup>	Private Forest <sup>2</sup>	Number of Areas	Acres
<b>State Total</b>	<b>649,667</b>	<b>328,742</b>	<b>20</b>	<b>123,810</b>
Hawai'i	446,766	106,745	8	94,954
Maui	68,220	53,180	5	18,543
Kaho'olawe	0	0	0	0
Lāna'i	0	6,150	0	0
Moloka'i	11,690	0	2	2,950
O'ahu	36,817	88,817	3	2,148
Kaua'i	86,174	73,850	2	5,215
Ni'ihau	0	0	0	0

1. State-owned and privately-owned lands under surrender agreement in forest reserve system.

2. Private forest land within conservation district. The majority of these lands were previously in the forest reserve system.

SOURCE: HAWAII STATE DEPARTMENT OF LAND AND NATURAL RESOURCES, DIVISION OF FORESTRY AND WILDLIFE.