

Geography & Land Use

Section 3

GEOGRAPHY & LAND USE

This section presents statistics on physical geography, water areas, climate, land use, value and ownership. Information on agriculture, forests and parks may be found in other sections of the book.

Maui County consists of four of the major eight islands in the State of Hawai'i: Maui, Moloka'i, Lāna'i and Kaho'olawe. The total land area of Maui County is 1,170.9 square miles with a general coastline of 210 statute miles. The highest peak in the county is on Haleakalā, Maui with its 10,023 foot summit at Pu'u 'ula'ula (Red Hill); the largest stream is Kalialinui-Wai'ale Gulch, Maui, 18 miles; the most extensive lake or similar body, Keālia Pond (Marsh), Maui, 500 acres and the highest waterfall (in the county and in the state) is Kahiwa, Moloka'i, a 1,750-foot cascade.

The State Land Use Commission currently zones 30,060 acres in Maui County as urban, 311,601 as conservation, 400,913 as agricultural and 8,326 as rural.

The island of Kaho'olawe (28,800 acres) was transferred from the federal government to the State of Hawai'i in May, 1994.

Considerable caution is necessary in comparing statistics from different sources on land use and ownership. Variations in definitions and survey dates seriously affect comparability.

Sources important to these tables are the U.S. National Climatic Data Center, and The State of Hawai'i Data Book, published annually by the Department of Business, Economic Development and Tourism.

3.1.1

LAND AND WATER AREA OF COUNTIES AND ISLANDS

County or Island	Square Miles			Acres ¹	
	Total	Land ²	Inland Water ³	Total	Land
State Total	6468.2	6,422.63	45.6	4,139,667	4,110,483
Counties⁴					
Hawai'i	4029.4	4,028.42	1.0	2,578,829	2,578,189
Maui	1170.9	1,161.52	9.4	749,389	743,373
Kalawao	13.0	11.99	1.0	8,314	7,674
Honolulu ⁵	624.9	600.74	24.2	399,962	384,474
Kaua'i ⁵	630.0	619.96	10.0	403,174	396,774
Islands⁴					
Hawai'i	4029.4	4,028.42	1.0	2,578,829	2,578,189
Maui	777.9	771.99	5.9	497,850	494,074
Molokini ⁶	0.0	0.04	0.0	23	23
Kaho'olawe	45.5	44.60	0.9	29,120	28,544
Lāna'i	141.9	141.07	0.8	90,797	90,285
Moloka'i	263.3	260.46	2.8	168,486	166,694
O'ahu	621.6	597.64	24.0	397,850	382,490
Kaua'i	561.2	552.35	8.8	359,136	353,504
Ni'ihau	68.7	67.60	1.1	43,968	43,264
Lehua	0.4	0.44	0.0	284	284
Ka'ula	0.2	0.25	0.0	158	158

1. Areas in acres were calculated directly from the figures shown for square miles; these equivalents were independently rounded, and hence may not add exactly to the indicated totals and subtotals. One square mile = 640 acres.

2. Dry land and land temporarily or partially covered by water, as marshland, swamps, etc. streams and canals under one-eighth statute mile wide; and lakes, reservoirs, and ponds under 40 acres of area.

3. Permanent inland water surface, such as lakes, reservoirs, and ponds having 40 acres or more of area; streams, sloughs, estuaries, and canals one-eighth statute mile or more in width; deeply indented embayments and sounds, and other coastal waters behind or sheltered by headlands or islands separated by less than 1 nautical mile of water and islands having less than 40 acres of area.

4. Because of rounding, island figures may not add to county figures.

5. Reflect inclusion of Ka'ula in the County of Kaua'i rather than in the City and County of Honolulu (Act 245, S.L.H. 1988, approved June 9, 1988).

6. Molokini, offshore of Maui, not measured; other sources give the area of Molokini as 0.036 square miles.

SOURCE: U.S. CENSUS BUREAU, 2010 CENSUS REDISTRICTING DATA (P.L. 94-171) SUMMARY FILE (FEBRUARY 2011), AND CALCULATIONS BY THE HAWAII STATE DEPARTMENT OF BUSINESS, ECONOMIC DEVELOPMENT & TOURISM, OFFICE OF PLANNING, STATE OF HAWAII DATA BOOK 2015 AND THE HAWAII STATE DATA CENTER, AND UNPUBLISHED RECORDS.

3.1.2

GENERAL COASTLINE AND TIDAL SHORELINE BY COUNTY AND ISLAND

	General Coastline ¹		Tidal Shoreline ²	
	Statute Miles	Kilometers ³	Statute Miles	Kilometers ³
State Total	750	1,207	1,052	1,693
Counties				
Hawai'i	266	428	313	504
Maui and Kalawao	210	338	343	552
Honolulu	137	220	234	377
Kaua'i	137	220	162	261
Islands⁴				
Hawai'i	266	428	313	504
Maui	120	193	149	240
Kaho'olawe	29	47	36	58
Lāna'i	47	76	52	84
Moloka'i	88	142	106	171
O'ahu	112	180	209	336
Kaua'i	90	145	110	177
Ni'ihau	45	72	50	80
Ka'ula	2	3	2	3
Northwestern Hawaiian Islands⁵				
Nihoa	3	5	3	5
Necker Island	2	3	2	3
French Frigate Shoals	6	10	6	10
Laysan Island	6	10	6	10
Lisianski Island	3	5	3	5
Kure Atoll	5	8	5	8

1. Figures are lengths of general outline of seacoast. Data for the four islands of Maui County are not consistent with the reported county total.

2. Shoreline of outer coast, offshore islands, bays, rivers, and creeks is included to the head of tidewater or to a point where tidal waters narrow to a width of 100 feet.

3. Derived from data expressed in statute miles; independently rounded and accordingly may not add exactly to indicated totals and subtotals. 1 mi. = 1.609 km.

4. Data are not available for five minor islands: Molokini, Lehua, Gardner Pinnacles, Maro Reef, and Pearl and Hermes Atoll.

5. Excludes the Midway Islands, which are part of the Hawaiian Archipelago but not legally part of the State of Hawai'i. Midway has a general coastline of 20 miles and a tidal shoreline of 33 miles.

SOURCE: U.S. DEPARTMENT OF COMMERCE, NATIONAL OCEAN SURVEY, THE COASTLINE OF THE UNITED STATES (1975).

3.1.3

MAJOR NAMED WATERFALLS MAUI COUNTY

Waterfall	Cascade Height (feet)	Horizontal Distance (feet)	Average Discharge (million gal/day)
Maui			
Honokōhau	1,120	500	26.6
Waihi'umalu	400	150	NA
Waimoku	40	50	37.1
Moloka'i			
Kahiwa	1,750	1,000	NA
Pāpalaua	1,200	500	NA
Wailele	500	150	NA
Hāloku	500	200	NA
Hīpuapua	500	300	NA
'Olo'upena	300	150	NA
Moa'ula	250	200	19.7

Note: Includes the largest named waterfalls in each island, either in height or average discharge; all other named falls 250 feet high or over; and well-known small falls. Many unnamed falls have sheer drops of 200 feet or more.

NA: Not available

SOURCE: U.S. GEOLOGICAL SURVEY, RECORDS; HAWAII' STATE DEPARTMENT OF LAND AND NATURAL RESOURCES, DIVISION OF WATER AND LAND DEVELOPMENT, RECORDS, AND HAWAII' STATE DEPARTMENT OF PLANNING AND ECONOMIC DEVELOPMENT, HAWAII', THE NATURAL ENVIRONMENT(1974), P.18.

3.1.4

ELEVATIONS OF MAJOR SUMMITS

Elevation of the highest point on each island and other important peaks

Island and Summit		Feet	Meters
Hawai'i	Mauna Ke'a ¹	13,796	4,205
	Mauna Loa ²	13,679	4,169
	Hualālai	8,271	2,521
	Ka'unu o Kaleihoohe	5,480	1,670
	Kīlauea (Uwēkahuna)	4,093	1,248
	Kīlauea (Halema'uma'u Rim)	3,660	1,116
Kaho'olawe	Pu'u 'O Moa'ula Nui	1,483	452
	Pu'u Moa'ula Iki	1,434	437
Maui	Haleakalā (Red Hill)	10,023	3,055
	Haleakalā (Ka'upō Gap)	8,201	2,500
	Pu'u Kukui	5,788	1,764
	'Āo Needle	2,250	686
Lāna'i	Lāna'ihale	3,366	1,026
Moloka'i	Kamakou	4,961	1,512
	Oloku'i	4,606	1,404
	Ka'unuohua	4,535	1,382
	Kalaupapa Lookout	1,600	488
	Mauna Loa (Kukui)	1,430	436
O'ahu	Ka'ala	4,003	1,220
	Pu'u Kalena	3,504	1,068
	Kōnahuanui	3,150	960
	Tantalus	2,013	614
	Olomana	1,643	501
	Koko Crater (Kohēlepelepe)	1,208	368
	Nu'uānu Pali Lookout	1,186	361
	Diamond Head	760	232
	Koko Head	642	196
Punchbowl	500	152	

3.1.4

CONTINUED

Island and Summit		Feet	Meters
Kaua'i	Kawaikini	5,243	1,598
	Wai'ale'ale	5,148	1,569
	Nāmolokama Mountain	4,421	1,348
	Kalalau Lookout	4,120	1,256
	Hā'upu	2,297	700
	Sleeping Giant (Nounou)	1,241	378
Ni'ihau	Paniau	1,250	381
Lehua		699	213
Ka'ula		548	167
Nihoa	Millers Peak	903	275
Necker Island	Summit Hill	276	84
French Frigate Shoal	La Perouse Pinnacles	120	37
Gardner Pinnacles		190	58
Maro Reef		Awash	Awash
Laysan Island		40	12
Lisianski Island		40	12
Pearl and Hermes Atoll		10	3
Midway Islands		12	4
Kure Atoll		20	6

1. According to the 1995 Guinness Book of Records (p. 147), "The world's tallest mountain measured from its submarine base (3,280 fathoms) in the Hawaiian Trough to its peak is Mauna Kea... with a combined height of 33,480 ft., of which 13,796 ft. are above sea level."

2. Guinness (p. 142-143) describes Mauna Loa as having "dimensions, but not height, [which] exceed those of Mt. Everest... The axes of its elliptical base, 16,322 ft. below sea level, have been estimated at 74 miles and 53 miles."

SOURCE: HAWAII STATE DEPARTMENT OF ACCOUNTING AND GENERAL SERVICES, SURVEY DIVISION, DATA PROVIDED APRIL 21, 1992; U.S. NATIONAL CARTOGRAPHIC INFORMATION CENTER, DATA PROVIDED OCTOBER 11, 1978; U.S. GEOLOGICAL SURVEY TOPOGRAPHIC MAPS, 1981-1984; HAWAIIAN GOVERNMENT SURVEY (FOR NIHOA AND MOLOKINI); U.S.S. Tanager Survey, 1923 (FOR NECKER ISLAND, FRENCH FRIGATE SHOALS, LAYSAN, LISIANSKI, PEARL, HERMES ATOLL AND KURE ATOLL).

3.1.5

MISCELLANEOUS GEOGRAPHIC STATISTICS BY ISLAND

	State	Hawai'i	Maui	Kaho'olawe	Lāna'i	Molokai	O'ahu	Kaua'i	Ni'ihau
Extreme Length (miles)	NA	93.0	48.0	11.0	18.0	38.0	44.0	33.0	8.0
Extreme Width (miles)	NA	76.0	26.0	6.0	13.0	10.0	30.0	25.0	6.0
Miles of Sea Cliffs with Heights of 1,000 Feet or More ¹	33.0	4.0	-	-	1.0	14.0	-	11.0	3.0
Miles from Coast of Most Remote Point	28.5	28.5	10.6	2.4	5.2	3.9	10.6	10.8	2.4
Percent of Area Within 5 Miles of Coast	48.6	30.0	76.1	100.0	100.0	100.0	79.0	65.0	100.0
Percent of Area with Elevation of Less than 500 Feet	20.8	12.0	24.9	38.9	24.8	37.3	45.3	35.6	78.2
Percent of Area with Elevation of 2,000 Feet or More	50.9	68.4	41.4	0.0	6.3	17.8	4.6	24.0	0.0
Approximate Mean Altitude (feet)	3,030.0	3,950.0	2,390.0	600.0	1,140.0	1,150.0	860.0	1380.0	530.0
Percent of Area with Slope Less than 10%	63.5	76.0	38.5	60.0	61.0	53.0	42.5	33.5	68.0
Percent of Area with Slope 20% or more	17.0	4.0	36.0	9.0	16.0	26.0	45.5	50.5	12.5

1. According to Lee S. Motteler, Geography and Map Division, Bernice P. Bishop Museum, the sea cliffs along the northeastern coast of Molokai between Umilehi Point and Pu'uka'ōkū Point drop 3,250 feet at an average slope of 58 degrees. These cliffs have been described by The Guinness Book of World Records (1995 edition, p. 154) as "the highest sea cliffs in the world."

NA: Not applicable.

SOURCE: HAWAII STATE DEPARTMENT OF PLANNING AND ECONOMIC DEVELOPMENT, HAWAII, THE NATURAL ENVIRONMENT (1974), P. 19; AND U.S. GEOLOGICAL SURVEY, ELEVATIONS AND DISTANCES IN THE UNITED STATES (1978), P. 4-5.

3.1.6

**TEMPERATURE AND PRECIPITATION
AVERAGES AND EXTREMES, MAUI COUNTY**

TEMPERATURE	Station	Period of Record	Elevation (feet)	Annual Average		Warmest Month		Coollest Month		Record High		Record Low	
				High	Low	High	Low	High	Low	High	Low	°F	Date
	Haleakalā Ranger Station	1949-2012	7,030	62.7	44.8	66.1	47.7	59.1	41.5	80	7/25/1953	27	2/26/1965
	Hāna Airport	1950-2012	70	80.8	67.4	83.6	69.8	78.2	63.9	94	11/3/1979	50	1/9/1953
	Kahului Airport	1954-2012	50	83.8	67.3	87.5	70.2	80.2	63.2	97	8/31/1994	48	1/20/1969
	Kailua (NE Maui, Inland)	1949-2012	700	76.2	63.5	79.0	65.8	73.9	60.5	88	9/18/1968	44	3/16/2009
	Kapalua Airport	1987-2012	240	81.9	69.1	85.6	71.9	78.2	66.0	98	4/20/2005	58	12/18/1988
	Molokaʻi Airport	1957-2012	450	81.4	67.6	85.4	71.0	77.4	63.1	96	4/14/1974	46	3/4/1987
	Lānaʻi Airport	1949-2012	1,300	79.3	62.7	82.7	65.8	75.8	59.2	93	7/2/2004	46	1/22/1955
	Lānaʻi City	1949-2012	1,620	75.4	62.4	78.5	65.1	72.5	59.5	92	10/20/2006	47	2/22/1973

PRECIPITATION	Station	Annual Avg Inches	Days Precip ≥ 0.01 in.	Wettest Year		Driest Year		Wettest Month		Driest Month		1 Day Record	
				Inches	Year	Inches	Year	Inches	Month	Inches	Month	Inches	Date
	Haleakalā Ranger Station	51.28	140	121.16	1980	17.71	1962	8.15	Jan	1.18	Jun	18.50	1/9/1980
	Hāna Airport	80.48	267	126.23	1965	49.64	1953	9.52	Mar	4.08	Jun	17.57	4/16/1968
	Kahului Airport	18.23	95	40.63	1989	6.76	1998	3.51	Jan	0.22	Jun	5.82	12/21/1955
	Kailua (NE Maui, Inland)	118.50	265	161.82	1969	79.20	1953	12.81	Mar	6.75	Jun	15.20	11/15/1965
	Kapalua Airport	28.62	157	48.43	2004	18.92	2000	4.54	Dec	1.00	Sept	8.14	3/24/2006
	Molokaʻi Airport	24.96	104	43.70	1963	11.06	2001	4.44	Jan	0.52	Jun	9.03	2/12/1989
	Lānaʻi Airport	18.82	58	47.66	1951	5.28	1999	3.29	Dec	0.50	Aug	10.45	11/10/1955
	Lānaʻi City	34.29	111	66.87	1968	15.64	1999	5.25	Jan	1.27	Jun	11.25	11/10/1955

SOURCE: U.S. DEPARTMENT OF COMMERCE, NATIONAL OCEANIC AND ATMOSPHERIC ADMINISTRATION, WESTERN REGIONAL CLIMATE CENTER, HAWAII CLIMATE SUMMARIES.

3.1.7

**MONTHLY RAINFALL AND TEMPERATURE AT SPECIFIED LOCATIONS
MAUI COUNTY, 2016**

Rainfall¹	Jan	Feb	Mar	Apr	May	June	July	Aug	Sept	Oct	Nov	Dec	Annual
Maui													
Haleakalā Ranger Station	0.04	2.21	2.37	4.48	7.22	2.65	8.49	6.34	6.13	4.32	1.33	12.83	17.73
Hāna Airport	1.20	3.34	7.18	5.54	9.55	5.47	7.44	13.37	10.09	3.45	3.76	19.42	89.81
Kahului Airport	0.55	0.99	1.95	1.20	3.03	0.35	1.35	0.54	1.24	0.65	0.56	6.59	19.00
Kailua (NE Maui)	1.87	5.48	10.41	13.73	10.48	9.39	5.68	7.39	20.11	10.47	8.53	4.40	9.39
Kapalua Airport	0.53	1.59	0.79	4.16	3.52	1.68	2.23	2.62	3.73	1.59	1.28	7.04	29.39
Kīhei	0.16	0.26	1.88	0.72	0.75	0.00	0.46	0.23	1.26	0.00	NA	NA	5.72
Kula Branch Station	0.04	1.16	5.13	1.55	2.89	1.16	3.42	2.54	3.03	0.08	0.23	4.44	26.88
‘Ohe‘o	1.11	2.05	0.45	7.75	2.66	6.08	6.37	9.71	13.97	5.40	5.62	9.48	58.06
Pā‘ia	0.77	1.85	1.97	5.61	7.63	2.80	3.58	4.18	3.22	3.07	NA	NA	34.68
‘Ulupalakua Ranch	0.20	0.28	0.96	0.40	5.72	1.67	4.02	3.12	4.74	0.12	0.65	7.83	20.10
Waihe‘e Valley	1.52	2.80	8.79	3.23	12.09	4.33	2.73	4.25	8.48	2.44	2.14	NA	52.80
Moloka‘i													
Maunaloa	0.79	1.82	1.19	0.67	1.79	0.89	4.92	3.10	2.93	1.14	0.60	5.41	4.29
Moloka‘i Airport	0.45	1.08	1.07	0.52	1.11	0.23	1.80	0.72	2.45	0.99	0.57	3.97	14.96
Kaunakakai	0.41	0.41	1.12	0.36	0.24	0.12	1.13	0.20	1.51	0.16	0.07	3.37	9.10

3.1.7

CONTINUED

Temperature ^{1,2}	Jan	Feb	Mar	Apr	May	June	July	Aug	Sept	Oct	Nov	Dec	Annual
Maui													
Haleakalā Ranger Station	53.5	51.4	51.6	53.5	54.3	55.0	57.9	58.6	56.0	56.1	55.9	52.7	NA
Hāna Airport	71.8	71.7	72.2	74.6	74.8	75.6	77.2	77.9	77.6	76.4	74.4	72.6	74.7
Kahului Airport	72.2	72.7	74.1	76.7	77.1	78.9	80.4	81.4	81.1	79.4	77.4	74.6	77.2
Kailua (NE Maui)	67.3	67.2	67.7	69.2	70.5	71.2	73.2	73.5	72.6	71.5	69.3	69.0	NA
Kapalua Airport	73.8	73.3	73.7	75.4	76.1	77.9	79.6	80.1	79.4	78.0	76.1	73.4	76.6
Kula Branch Station	61.1	60.5	61.4	63.4	64.0	65.8	67.1	68.1	67.3	66.0	63.9	62.4	64.2
'Ohe'o	NA	74.4	74.1	75.1	76.5	77.3	77.3	78.5	78.3	76.8	75.2	74.1	77.2
Moloka'i													
Moloka'i Airport	71.5	71.6	72.0	75.1	75.3	77.8	79.8	81.2	80.6	79.7	77.4	73.7	76.5

1. Individual months not used for annual or monthly statistics if more than 5 days are missing.

2. Average temperature for the month.

NA: Not available

SOURCE: U.S. DEPARTMENT OF COMMERCE, NATIONAL OCEANIC AND ATMOSPHERIC ADMINISTRATION, WESTERN REGIONAL CLIMATE CENTER, HAWAII CLIMATE SUMMARIES.

3.1.8

ANNUAL RAINFALL AND TEMPERATURE AT SPECIFIED LOCATIONS, MAUI COUNTY

Annual Rainfall, Inches					
	2012	2013	2014	2015	2016
Maui					
Haleakalā Ranger Station	13.37	NA	13.29	33.09	17.73
Hāna Airport	14.18	56.76	76.85	71.25	89.81
Kahului Airport	5.04	15.41	23.25	29.26	19.00
Kailua (NE Maui)	17.02	NA	21.65	NA	9.39
Kapalua Airport	19.07	18.84	36.06	32.99	29.39
Kīhei	2.17	6.76	17.97	14.22	5.72
Kula Branch Station	11.34	22.16	39.26	39.86	26.88
‘Ohe‘o	63.81	52.09	70.42	68.10	58.06
Pā‘ia	20.03	29.06	36.18	34.71	34.68
‘Ulupalakua Ranch	8.12	20.20	36.82	30.84	20.10
Waihe‘e Valley	27.23	40.63	58.75	63.72	52.80
Moloka‘i					
Maunaloa	1.75	1.42	16.95	14.88	4.29
Moloka‘i Airport	7.15	18.91	40.38	22.51	14.96
Kaunakakai	4.02	15.08	19.59	13.90	9.10
Average Annual Temperature, Fahrenheit					
	2012	2013	2014	2015	2016
Maui					
Haleakalā Ranger Station	50.5	NA	NA	51.7	NA
Hāna Airport	74.6	74.2	74.9	75.4	74.7
Kahului Airport	75.5	76.5	77.0	77.2	77.2
Kapalua Airport	75.8	78.2	76.7	77.0	76.6
Kula Branch Station	63.0	63.5	64.1	64.7	64.2
‘Ohe‘o	74.2	75.5	75.5	73.9	77.2
Moloka‘i					
Moloka‘i Airport	74.8	74.2	74.9	75.2	76.5

NA: Not available.

SOURCE: U.S. DEPT. OF COMMERCE, NATIONAL OCEANIC AND ATMOSPHERIC ADMINISTRATION, NATIONAL CLIMATIC DATA CENTER.

3.2.1

TRENDS IN REAL PROPERTY TAX BASE MAUI COUNTY

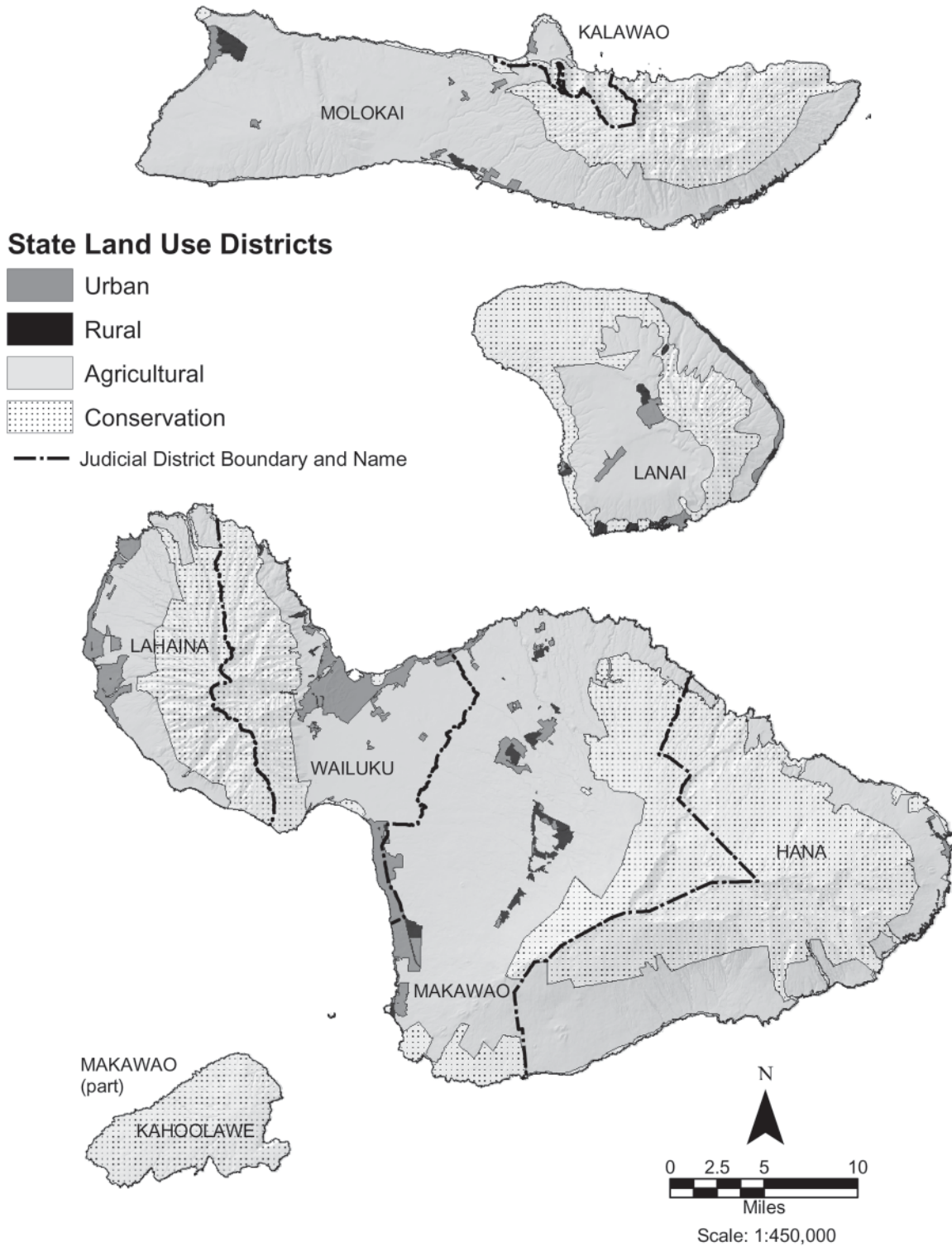
*Gross valuation in thousands
As of mid-April*

	2011	2012	2013	2014	2015	2016
Residential	6,111,342	5,661,777	5,893,266	6,028,645	6,711,804	7,254,893
Land	4,000,496	3,503,854	3,601,197	3,686,699	4,070,656	4,261,638
Improvement	2,110,846	2,157,923	2,292,069	2,341,946	2,641,148	2,993,255
Apartment	5,183,099	4,734,126	4,916,549	5,234,865	5,946,767	6,277,268
Land	1,756,162	1,491,850	1,623,663	1,726,925	1,848,829	1,895,057
Improvement	3,426,937	3,242,276	3,292,887	3,507,941	4,097,938	4,382,212
Commercial	2,369,348	2,090,675	2,118,943	2,172,533	3,181,514	3,683,412
Land	1,464,329	1,183,383	1,196,976	1,222,050	2,043,733	2,316,865
Improvement	905,019	907,292	921,968	950,483	1,137,781	1,366,546
Industrial	1,562,690	1,617,626	1,793,130	1,628,188	1,869,580	2,352,738
Land	894,229	959,813	1,115,918	919,840	1,100,212	1,517,727
Improvement	668,461	657,813	677,213	708,349	769,368	835,011
Agricultural	3,138,433	3,134,209	3,401,327	3,515,172	3,762,908	4,000,605
Land	2,110,435	1,998,325	2,089,824	2,151,407	2,241,518	2,256,689
Improvement	1,027,998	1,135,884	1,311,504	1,363,765	1,521,390	1,743,916
Conservation	426,878	406,382	500,531	471,161	490,533	525,273
Land	297,308	281,471	295,211	281,645	285,855	305,577
Improvement	129,570	124,911	205,320	189,516	204,678	219,696
Hotel/Resort	7,535,906	7,374,930	7,404,724	8,884,090	9,378,253	9,769,407
Land	1,820,070	1,434,536	1,450,145	1,783,169	1,858,055	1,835,145
Improvement	5,715,836	5,940,394	5,954,578	7,100,922	7,520,198	7,934,261
Homeowner	13,523,899	12,111,365	12,172,724	12,911,672	14,318,802	15,493,779
Land	6,859,815	5,530,653	5,529,016	5,988,415	6,645,531	6,994,332
Improvement	6,664,084	6,580,712	6,643,709	6,923,257	7,673,272	8,499,447
Time Share	1,627,652	1,510,939	1,484,089	1,595,127	1,773,726	1,908,345
Land	205,659	173,172	169,889	191,541	202,790	203,455
Improvement	1,421,993	1,337,767	1,314,201	1,403,586	1,570,936	1,704,890
Commercialized Residential	70,464	75,248	94,183	109,353	120,166	163,441
Land	36,416	31,778	41,861	57,361	58,698	77,084
Improvement	34,048	43,470	52,323	51,992	61,469	86,357
Total	41,549,711	38,717,277	39,779,467	42,550,806	47,554,054	51,429,159

SOURCE: CITY AND COUNTY OF HONOLULU, DEPARTMENT OF BUDGET AND FISCAL SERVICES, REAL PROPERTY ASSESSMENT DIVISION.

3.2.2

LAND USE DISTRICTS, MAUI COUNTY



SOURCE: HAWAII STATE OFFICE OF PLANNING, HAWAII STATEWIDE GIS PROGRAM, APRIL 2013.

3.2.3

ESTIMATED ACREAGE OF LAND USE DISTRICTS BY ISLAND, 2015

Total acreage, including inland water, as classified by the Hawai'i State Land Use Commission under the provisions of Chapter 205, Hawai'i Revised Statutes, as amended; all data are approximate

Island	Classification by State Land Use Commission ²				
	Total Area ¹	Urban	Conservation	Agricultural	Rural
Hawai'i ³	2,573,400	54,145	1,304,347	1,212,886	2,023
Maui	465,800	24,191	194,836	242,720	4,053
Lāna'i	90,500	3,330	38,197	46,566	2,407
Moloka'i	165,800	2,539	49,768	111,627	1,866
Kaho'olawe	28,800	0	28,800	0	0
O'ahu	386,188	101,661	156,829	127,698	0
Kaua'i ⁴	353,900	14,573	198,769	139,305	1,253
Ni'ihau ⁴	45,700	0	0	45,700	0
Ka'ula and Lehua	400	0	400	0	0
Other islands ⁵	1,900	0	1,900	0	0
State Total	4,112,388	200,439	1,973,846	1,926,502	11,602

1. These totals differ somewhat from the official figures based on measurements by the Geography Division of the U.S. Bureau of the Census, cited in Section 5.

2. For definitions, see Hawai'i Revised Statutes, Section 205-2.

3. County records update indicated 5 acres changed from Agricultural to Urban.

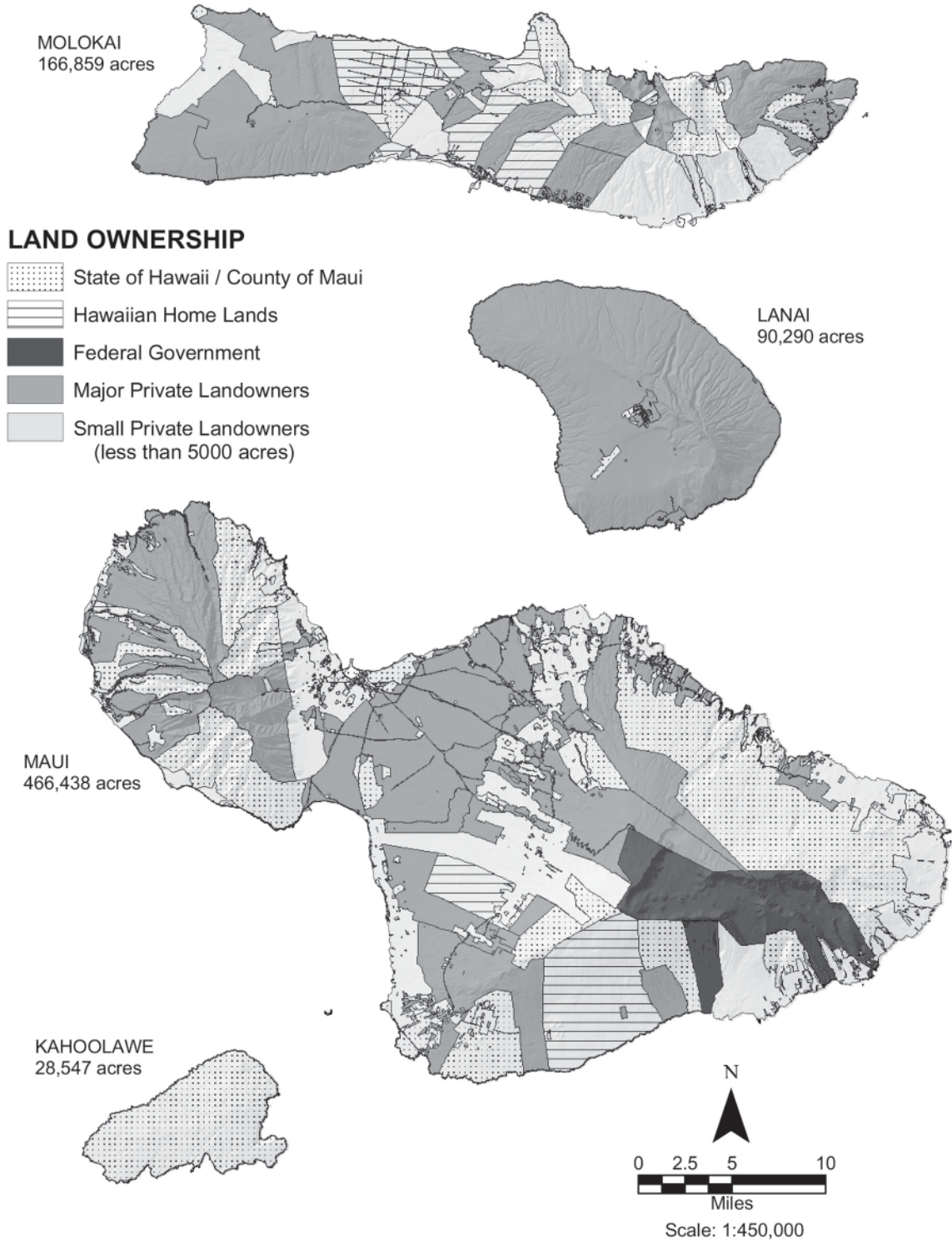
4. May be revised, pending updates of County records.

5. The Northwestern Hawaiian Islands, from Nihoa to Kure Atoll, excluding Midway.

SOURCE: HAWAII STATE DEPARTMENT OF BUSINESS, ECONOMIC DEVELOPMENT AND TOURISM, LAND USE COMMISSION.

3.2.4

LAND OWNERSHIP, MAUI COUNTY



SOURCE: HAWAII STATE OFFICE OF PLANNING, HAWAII STATEWIDE GIS PROGRAM, AUGUST 2013.

3.2.5

NUMBER OF LAND RECORDS BY COUNTY

For fiscal year ending June 30

Year	Maui	Hawai'i	Honolulu	Kaua'i	State Total
1995	56,726	129,856	242,285	27,136	456,003
1996	57,665	130,623	246,933	27,916	463,137
1997	58,624	131,981	251,731	28,876	471,212
1998	59,505	132,605	253,886	29,126	475,122
1999	60,490	133,322	255,589	29,336	478,737
2000	61,897	134,308	258,121	29,553	483,879
2001	62,873	135,499	259,456	29,818	487,646
2002	NA	NA	260,662	30,097	NA
2003	60,472	133,321	252,435	28,432	474,660
2004	60,537	134,290	255,029	28,772	478,628
2005	61,273	134,021	258,415	28,936	482,645
2006	62,521	134,885	262,479	29,423	489,308
2007	64,597	136,612	268,441	30,831	500,481
2008	65,938	138,281	271,859	31,822	507,900
2009	67,981	139,167	274,483	32,398	514,029
2010	68,930	139,649	276,582	32,870	518,031
2011	70,365	139,883	277,581	32,993	520,822
2012	71,101	140,008	278,825	34,023	523,957
2013	71,234	140,196	279,754	34,172	525,356
2014	71,515	140,257	281,463	34,124	527,359
2015	71,907	140,336	285,092	33,370	530,705
2016	71,992	140,753	287,115	33,207	533,067

NA: Not available

SOURCE: CITY AND COUNTY OF HONOLULU, DEPARTMENT OF BUDGET & FISCAL SERVICES, REAL PROPERTY ASSESSMENT DIVISION.

3.2.6

NATIONAL AND STATE HISTORIC PLACES MAUI COUNTY

Island of Maui

'Alae Petroglyphs	Kamaole House Site
Alena Habitation Site	Kauhihale Complex
Asa Baldwin Residence	Kaupō School
Bank of Hawaii- Ha'ikū Branch	Ka'umi'umiua Heiau
Cave of Seven Coffins	Keanae School
Chee Kung Tong Society Hall	Keone'ō'io Archaeological District
Crater Historic District (Haleakala National Park)	Ket Hing Society Hall
Frank Baldwin/H.F. Rice Residence	Kilolani Congregational Church
Fred C. Baldwin Memorial Home	King Kamehameha III's Royal Residential Complex
Gomes Residence	Kīpahulu Historic District
H. Perrine Baldwin High School	Kīpapa Archaeological District
Haiku Fruit & Packing Co. Manager's House	Kula Sanitorium
Haiku Mill	Lahaina Historic District
Hale Hō'ike'ike	Lo'alo'a Heiau
Hale Pa'i	Luala'ilua Cave
Haleki'i-Pihana Heiau	Luala'ilua Heiau
Hale o Lono Heiau	Luala'ilua Terrace Complex
Hāmoa Complex	Lucy Kaiewe Searle Residence
Hāna Belt Road	Ma'alaea General Store
Hāna Hongwanji Temple	Makawao Union Church
Hāna District Police Station & Courthouse	Maui Jinsha Mission
Hāna Store	Moku'ula
Hanamau'uloa Complex	Molohai Heiau
Hardy House	Naniloa Drive Overpass Bridge
Holy Ghost Catholic Church	Old Bailey House
Honokalani Village	Pā'ia Mantokuji Soto Mission
Honokowai Petroglyphs	Pā'ia School
'Īao Theater	Papakea Heiau
Ka'ahumanu Church	Papakea Petroglyphs
Kahikinui House	Pi'ilanihale Heiau
Kahului Railroad Station	Pioneer Mill Company Office
Kaiapuni Ko'a	Pu'unēnē School
Kaimupe'elua Heiau	Wahene Platform
Kalepolepo Fishpond	Wai'ale Bridge
Kaluakakalioa Cave	Waihe'e Church
Kaluanui Heiau Complex	Waikapū Stone Church

3.2.6

CONTINUED

Island of Maui (Continued)

Wailuku Civic Center District
Wailuku School
Wānanalua Congregational Church
William K. Kaluakini Residence
Wo Hing Society Hall

Island of Kahoʻolawe

Kahoʻolawe Archaeological District

Island of Lānaʻi

Keāliakapu Complex-Kaunolu Village Site
Puʻu Pehe Platform

Island of Molokaʻi

Ahahui Kalanianaʻole
ʻAhina Heiau
Aliʻi Pond
Anahaki Gulch Complex
Ananaluwahine Cave
California Packing Corp.'s Plantation Manager's Res.
Fishing shrine at Keawa Ka Lani

FISHPONDS

Halemahana Fishpond
Honouliwai Fishtrap
Ipukaiole Fishpond
Kahinapōhaku Fishpond
Kainalu Fishpond
Kaluaʻaha Fishpond
Kipapa Fishpond
Kolokoʻeli Fishpond
Mahilika Fishpond
Mikiawa Fishpond
Pahiomu Fishpond
Panahana Fishpond
Waiakea Fishpond
Weheleauʻulu Fishpond

Hökūkano ʻUalapuʻe Complex
ʻIliʻiliʻōpae Heiau
Kahokukano Heiau
Kalauonākukui Heiau
Kaluakapiʻioho Heiau
Keawanui Fishpond
Kukui Heiau
Pākuʻi Heiau
Puʻuʻōlelo Heiau
ʻUalapuʻe Fishpond
Kaheu Gulch Habitation Site
Kahili Koa
Kalaupapa Leprosy Settlement
Kaluaʻaha Church
Kalualohe Complex
Kamakaʻipo Gulch Habitation Site
Kamakaʻipo Lowlands Habitation Site
Kamakaʻipo Point Fishing Shrine
Kapeʻelua Complex
Kapukikani Heiau
Kaupikiawa Cave
Kawela archeological sites
Keawakalae Koʻa
Kilohana School
Luahine Maika (Bowling) Run
Molokaʻi Public Library
Nanahoa Complex
Nihoa Complex
R. W. Meyer Sugar Mill
Sandalwood Pit
Southwest Molokaʻi Archeological District
St. Joseph Catholic Church
U.S. Coast Guard Molokaʻi Light

SOURCE: HAWAIIʻI STATE DEPARTMENT OF LAND AND NATURAL RESOURCES, STATE HISTORIC PRESERVATION DIVISION.

3.2.7

DEPARTMENT OF HAWAIIAN HOME LANDS ACREAGE, LESSEES, AND APPLICANTS BY ISLAND

The Department of Hawaiian Home Lands administers land set aside for the benefit of qualified Native Hawaiians, who receive homestead leases and financial assistance from the Department

2014/2015	Maui	Lānaʻi	Molokaʻi	Hawaiʻi	Kauaʻi	Oʻahu	State Total
Acreage¹							
Homestead Leases	NA	NA	NA	NA	NA	NA	NA
General Leases	2	0	1,764	741	98	234	2,839
Licenses	7,110	0	350	16,470	84	309	24,322
Others	6,351	25	9,982	19,122	1,184	1,853	38,517
Homestead Leases¹							
Residential	1,276	29	394	1,707	700	4,223	8,329
Agricultural	65	0	423	506	46	61	1,101
Pastoral	75	0	27	305	1	0	408
Applications²							
Residential	3,714	75	765	5,766	1,630	10,626	22,576
Agricultural	4,591	0	1,056	7,089	2,211	3,631	18,578
Pastoral	599	0	197	1,951	316	0	3,063

NA: Not available

1. As of June 30, 2014.

2. As of June 30, 2015.

SOURCE: HAWAII STATE DEPARTMENT OF HAWAIIAN HOMELANDS, ANNUAL REPORTS AND RECORDS.

3.2.8

**DISPOSITION OF STATE LANDS
MAUI COUNTY, 2016**

Document Number	Permittee or Grantee Name	Location	Acres	Use	Payment
Revocable Permits					
RP7869	Noel and Linda Keliikoa	Moloka'i	0.29	Ag-Residence	1,224
General Leases & Term Easements					
GL6082	Association of Apartment Owners of Lahaina Roads	Lahaina	0.054	Seawall / Boat ramp	151,500

SOURCE: STATE OF HAWAII, DEPARTMENT OF LAND AND NATURAL RESOURCES.

3.2.9

SINGLE FAMILY HOME AND CONDOMINIUM SALES BY AREA, MAUI COUNTY, 2016

Area	# Sales	% Change Last Yr	Avg. Price	% Change Last Yr	Median Price	% Change Last Yr	Total Volume	% Change Last Yr
Single Family Homes								
Central	346	-14%	\$585,975	12%	\$557,000	10%	\$202,747,390	-3%
Ha'ikū	66	-19%	\$917,701	-3%	\$841,500	20%	\$60,568,249	-21%
Hāna	11	38%	\$1,230,273	36%	\$750,000	26%	\$13,533,000	88%
Kā'anapali	22	0%	\$1,823,208	-11%	\$1,597,500	-11%	\$40,110,577	-11%
Kahakuloa	2	100%	\$941,750	44%	\$941,750	44%	\$1,883,500	187%
Kapalua	14	40%	\$3,638,571	21%	\$2,562,500	-10%	\$50,940,000	70%
Kaupo	1	NA	\$1,300,000	NA	\$1,300,000	NA	\$1,300,000	NA
Kīhei	162	10%	\$938,836	8%	\$633,750	6%	\$152,091,468	20%
Kula/Ulupalakua/Kanaio	82	-15%	\$1,072,674	15%	\$717,500	-1%	\$87,959,229	-3%
Lahaina	67	31%	\$1,327,586	17%	\$760,000	9%	\$88,948,274	54%
Lāna'i	20	43%	\$446,275	-20%	\$419,500	12%	\$8,925,500	14%
Makawao/Olinda/Hali'imaile	71	22%	\$648,809	-2%	\$552,000	4%	\$46,065,450	21%
Maui Meadows	26	24%	\$1,250,829	5%	\$1,287,500	26%	\$32,521,550	30%
Moloka'i	18	-22%	\$483,111	7%	\$386,500	53%	\$8,695,999	-17%
Nāhiku	1	-67%	\$575,000	47%	\$575,000	56%	\$575,000	-51%
Nāpili/Kahana/Honokōwai	40	33%	\$1,136,188	31%	\$875,000	-1%	\$45,447,515	75%
Olowalu	3	0%	\$2,683,333	130%	\$1,700,000	15%	\$8,050,000	130%
Pukalani	71	3%	\$668,828	-1%	\$635,000	2%	\$47,486,809	1%
Spreckelsville/Pā'ia/Ku'au	29	26%	\$1,926,552	116%	\$748,000	23%	\$55,870,000	172%
Wailea/Mākena	24	-11%	\$3,634,042	-8%	\$2,825,000	49%	\$87,217,000	-18%
Maui Summary	1,076	-1%	\$967,413	13%	\$636,750	10%	\$1,040,936,510	12%
Condominiums								
Central	165	28%	\$369,799	16%	\$345,000	10%	\$61,016,786	48%
Kā'anapali	119	17%	\$1,230,307	-2%	\$1,022,500	3%	\$146,406,509	14%
Kapalua	33	-21%	\$2,053,012	7%	\$965,000	-6%	\$67,749,384	-16%
Kīhei	457	4%	\$419,968	4%	\$335,000	-2%	\$191,925,250	9%
Lahaina	72	-29%	\$475,833	2%	\$480,573	9%	\$34,259,955	-28%
Lāna'i	6	100%	\$1,503,333	15%	\$1,212,500	-33%	\$9,020,000	130%
Mā'alaea	58	35%	\$417,815	15%	\$402,000	18%	\$24,233,264	56%
Moloka'i	15	-12%	\$177,200	77%	\$170,000	85%	\$2,658,000	56%
Nāpili/Kahana/Honokōwai	266	36%	\$433,989	-2%	\$407,500	2%	\$115,441,078	33%
Pukalani	10	233%	\$513,164	-6%	\$507,500	1%	\$5,131,638	212%
Spreckelsville/Pā'ia/Ku'au	4	100%	\$905,750	-11%	\$321,500	-68%	\$3,623,000	79%
Wailea/Mākena	105	-5%	\$1,397,156	-10%	\$1,075,000	5%	\$146,701,400	-15%
Maui Summary	1,310	10%	\$616,921	-3%	\$415,000	1%	\$808,166,264	6%

NA: Not available

SOURCE: REALTORS ASSOCIATION OF MAUI, MLS SALE DATA.

3.2.10

**LAND SALES
BY AREA, MAUI COUNTY, 2016**

Area	# Sales	% Change Last Yr	Avg. Price	% Change Last Yr	Median Price	% Change Last Yr	Total Volume	% Change Last Yr
Central	19	-27%	\$352,658	-17%	\$315,000	20%	\$6,700,500	-39%
Ha'ikū	21	-5%	\$865,024	55%	\$535,000	28%	\$18,165,500	48%
Hāna	3	-40%	\$278,333	8%	\$310,000	3%	\$835,000	-35%
Honokohau	0	-100%	\$0	-100%	\$0	-100%	\$0	-100%
Kā'anapali	17	21%	\$660,684	-1%	\$680,000	6%	\$11,231,625	20%
Kahakuloa	5	400%	\$321,400	-15%	\$345,000	-8%	\$1,607,000	326%
Kapalua	7	250%	\$1,081,429	-63%	\$925,000	-69%	\$7,570,000	28%
Kaupo	0	-100%	\$0	-100%	\$0	-100%	\$0	-100%
Kīhei	12	-20%	\$675,167	32%	\$454,750	1%	\$8,102,000	6%
Kipahulu	2	NA	\$592,500	NA	\$592,500	NA	\$1,185,000	NA
Kula/Ulupalakua/ Kanaio	13	-32%	\$617,231	15%	\$540,000	-2%	\$8,024,000	-21%
Lahaina	20	100%	\$1,048,178	70%	\$999,500	97%	\$20,963,560	240%
Lāna'i	0	-100%	\$0	-100%	\$0	-100%	\$0	-100%
Makawao/Olinda/ Hali'imaile	9	80%	\$378,457	-47%	\$330,000	16%	\$3,406,111	-5%
Maui Meadows	2	100%	\$522,500	-16%	\$522,500	-16%	\$1,045,000	67%
Moloka'i	13	18%	\$142,023	59%	\$125,000	123%	\$1,846,300	88%
Nāhiku	2	NA	\$469,250	NA	\$469,250	NA	\$938,500	NA
Nāpili/Kahana/ Honokōwai	2	100%	\$412,500	-58%	\$412,500	-58%	\$825,000	-15%
Olowalu	3	50%	\$731,333	-16%	\$699,000	-20%	\$2,194,000	25%
Pukalani	6	100%	\$325,502	-60%	\$307,490	-44%	\$1,953,010	-20%
Spreckelsville/ Pā'ia/Ku'au	1	NA	\$2,950,000	NA	\$2,950,000	NA	\$2,950,000	NA
Wailea/Mākena	3	-75%	\$875,000	-82%	\$675,000	-85%	\$2,625,000	-96%
Maui Summary	160	4%	\$638,544	-28%	\$459,750	3%	\$102,167,106	-25%

NA: Not available

SOURCE: REALTORS ASSOCIATION OF MAUI, MLS SALE DATA.

3.2.11

FOREST AND NATURAL AREA ACREAGE BY ISLAND

On June 30, 2015

Island	Conservation District Forest Land		Natural Areas	
	Forest Reserve ¹	Private Forest ²	Number of Areas	Acres
State Total	651,002	328,742	21	123,810
Hawai'i	448,101	106,745	8	94,954
Maui	68,220	53,180	5	18,543
Kaho'olawe	0	0	0	0
Lāna'i	0	6,150	0	0
Moloka'i	11,690	0	2	2,950
O'ahu	36,817	88,817	4	2,148
Kaua'i	86,174	73,850	2	5,215
Ni'ihau	0	0	0	0

1. State-owned and privately-owned lands under surrender agreement in forest reserve system.

2. Private forest land within conservation district. The majority of these lands were previously in the forest reserve system.

SOURCE: HAWAII STATE DEPARTMENT OF LAND AND NATURAL RESOURCES, DIVISION OF FORESTRY AND WILDLIFE.