

# Geography & Land Use

## Section 3

# GEOGRAPHY & LAND USE

This section presents statistics on physical geography, water areas, climate, land use, value and ownership. Information on agriculture, forests and parks may be found in other sections of the book.

Maui County consists of four of the major eight islands in the State of Hawai'i: Maui, Moloka'i, Lāna'i and Kaho'olawe. The total land area of Maui County is 1,170.9 square miles with a general coastline of 210 statute miles. The highest peak in the county is on Haleakalā, Maui with its 10,023 foot summit at Pu'u 'ula'ula (Red Hill); the largest stream is Kalialinui-Wai'ale Gulch, Maui, 18 miles; the most extensive lake or similar body, Keālia Pond (Marsh), Maui, 500 acres, and the highest waterfall (in the county and in the state) is Kahiwa, Moloka'i, a 1,750-foot cascade.

The State Land Use Commission currently zones 30,060 acres in Maui County as urban, 311,601 as conservation, 400,913 as agricultural and 8,326 as rural.

The island of Kaho'olawe (28,800 acres) was transferred from the federal government to the State of Hawai'i in May 1994.

Considerable caution is necessary in comparing statistics from different sources on land use and ownership. Variations in definitions and survey dates seriously affect comparability.

Sources important to these tables are the U.S. National Climatic Data Center, and The State of Hawai'i Data Book, published annually by the Department of Business, Economic Development and Tourism.

### 3.1.1

## LAND AND WATER AREA OF COUNTIES AND ISLANDS

County or Island	Square Miles			Acres <sup>1</sup>	
	Total	Land <sup>2</sup>	Inland Water <sup>3</sup>	Total	Land
<b>State Total</b>	<b>6,468.2</b>	<b>6,422.63</b>	<b>45.6</b>	<b>4,139,667</b>	<b>4,110,483</b>
<b>Counties<sup>4</sup></b>					
Hawai'i	4,029.4	4,028.42	1.0	2,578,829	2,578,189
Maui	1,170.9	1,161.52	9.4	749,389	743,373
Kalawao	13.0	11.99	1.0	8,314	7,674
Honolulu <sup>5</sup>	624.9	600.74	24.2	399,962	384,474
Kaua'i <sup>5</sup>	630.0	619.96	10.0	403,174	396,774
<b>Islands<sup>4</sup></b>					
Hawai'i	4,029.4	4,028.42	1.0	2,578,829	2,578,189
Maui	777.9	771.99	5.9	497,850	494,074
Molokini <sup>6</sup>	0.0	0.04	0.0	23	23
Kaho'olawe	45.5	44.60	0.9	29,120	28,544
Lāna'i	141.9	141.07	0.8	90,797	90,285
Moloka'i	263.3	260.46	2.8	168,486	166,694
O'ahu	621.6	597.64	24.0	397,850	382,490
Kaua'i	561.2	552.35	8.8	359,136	353,504
Ni'ihau	68.7	67.60	1.1	43,968	43,264
Lehua	0.4	0.44	0.0	284	284
Ka'ula	0.2	0.25	0.0	158	158

1. Areas in acres were calculated directly from the figures shown for square miles; these equivalents were independently rounded, and hence may not add exactly to the indicated totals and subtotals. One square mile = 640 acres.

2. Dry land and land temporarily or partially covered by water, as marshland, swamps, etc. streams and canals under one-eighth statute mile wide; and lakes, reservoirs, and ponds under 40 acres of area.

3. Permanent inland water surface, such as lakes, reservoirs, and ponds having 40 acres or more of area; streams, sloughs, estuaries, and canals one-eighth statute mile or more in width; deeply indented embayments and sounds, and other coastal waters behind or sheltered by headlands or islands separated by less than 1 nautical mile of water and islands having less than 40 acres of area.

4. Because of rounding, island figures may not add to county figures.

5. Reflect inclusion of Ka'ula in the County of Kaua'i rather than in the City and County of Honolulu (Act 245, S.L.H. 1988, approved June 9, 1988).

6. Molokini, offshore of Maui, not measured; other sources give the area of Molokini as 0.036 square miles.

SOURCE: U.S. CENSUS BUREAU, 2010 CENSUS REDISTRICTING DATA (P.L. 94-171) SUMMARY FILE (FEBRUARY 2011), AND CALCULATIONS BY THE HAWAII STATE DEPARTMENT OF BUSINESS, ECONOMIC DEVELOPMENT & TOURISM, OFFICE OF PLANNING, STATE OF HAWAII DATA BOOK 2015 AND THE HAWAII STATE DATA CENTER, AND UNPUBLISHED RECORDS.

### 3.1.2

## GENERAL COASTLINE AND TIDAL SHORELINE BY COUNTY AND ISLAND

	General Coastline <sup>1</sup>		Tidal Shoreline <sup>2</sup>	
	Statute Miles	Kilometers <sup>3</sup>	Statute Miles	Kilometers <sup>3</sup>
<b>State Total</b>	<b>750</b>	<b>1,207</b>	<b>1,052</b>	<b>1,693</b>
<b>Counties</b>				
Hawai'i	266	428	313	504
Maui and Kalawao	210	338	343	552
Honolulu	137	220	234	377
Kaua'i	137	220	162	261
<b>Islands<sup>4</sup></b>				
Hawai'i	266	428	313	504
Maui	120	193	149	240
Kaho'olawe	29	47	36	58
Lāna'i	47	76	52	84
Moloka'i	88	142	106	171
O'ahu	112	180	209	336
Kaua'i	90	145	110	177
Ni'ihau	45	72	50	80
Ka'ula	2	3	2	3
<b>Northwestern Hawaiian Islands<sup>5</sup></b>				
Nihoa	3	5	3	5
Necker Island	2	3	2	3
French Frigate Shoals	6	10	6	10
Laysan Island	6	10	6	10
Lisianski Island	3	5	3	5
Kure Atoll	5	8	5	8

1. Figures are lengths of general outline of seacoast. Data for the four islands of Maui County are not consistent with the reported county total.

2. Shoreline of outer coast, offshore islands, bays, rivers, and creeks is included to the head of tidewater or to a point where tidal waters narrow to a width of 100 feet.

3. Derived from data expressed in statute miles; independently rounded and accordingly may not add exactly to indicated totals and subtotals. 1 mi. = 1.609 km.

4. Data are not available for five minor islands: Molokini, Lehua, Gardner Pinnacles, Maro Reef, and Pearl and Hermes Atoll.

5. Excludes the Midway Islands, which are part of the Hawaiian Archipelago but not legally part of the State of Hawai'i. Midway has a general coastline of 20 miles and a tidal shoreline of 33 miles.

SOURCE: U.S. DEPARTMENT OF COMMERCE, NATIONAL OCEAN SURVEY, THE COASTLINE OF THE UNITED STATES (1975).

### 3.1.3

## MAJOR NAMED WATERFALLS MAUI COUNTY

Waterfall	Cascade Height (feet)	Horizontal Distance (feet)	Average Discharge (million gal/day)
<b>Maui</b>			
Honokōhau	1,120	500	26.6
Waihi'umalu	400	150	NA
Waimoku	40	50	37.1
<b>Moloka'i</b>			
Kahiwa	1,750	1,000	NA
Pāpalaua	1,200	500	NA
Wailele	500	150	NA
Hāloku	500	200	NA
Hīpuapua	500	300	NA
'Olo'upena	300	150	NA
Moa'ula	250	200	19.7

Note: Includes the largest named waterfalls in each island, either in height or average discharge; all other named falls 250 feet high or over; and well-known small falls. Many unnamed falls have sheer drops of 200 feet or more.

NA: Not available

SOURCE: U.S. GEOLOGICAL SURVEY, RECORDS; HAWAI'I STATE DEPARTMENT OF LAND AND NATURAL RESOURCES, DIVISION OF WATER AND LAND DEVELOPMENT, RECORDS, AND HAWAI'I STATE DEPARTMENT OF PLANNING AND ECONOMIC DEVELOPMENT, HAWAI'I, THE NATURAL ENVIRONMENT(1974), P.18.

### 3.1.4

## ELEVATIONS OF MAJOR SUMMITS

*Elevation of the highest point on each island and other important peaks*

Island and Summit	Feet	Meters	
<b>Hawai'i</b>	Mauna Ke'a <sup>1</sup>	13,796	4,205
	Mauna Loa <sup>2</sup>	13,679	4,169
	Hualālai	8,271	2,521
	Ka'unu o Kaleihoohe	5,480	1,670
	Kīlauea (Uwēkahuna)	4,093	1,248
	Kīlauea (Halema'uma'u Rim)	3,660	1,116
<b>Kaho'olawe</b>	Pu'u 'O Moa'ula Nui	1,483	452
	Pu'u Moa'ula Iki	1,434	437
<b>Maui</b>	Haleakalā (Red Hill)	10,023	3,055
	Haleakalā (Ka'upō Gap)	8,201	2,500
	Pu'u Kukui	5,788	1,764
	'Īao Needle	2,250	686
<b>Lāna'i</b>	Lāna'ihale	3,366	1,026
<b>Moloka'i</b>	Kamakou	4,961	1,512
	Oloku'i	4,606	1,404
	Ka'unuohua	4,535	1,382
	Kalaupapa Lookout	1,600	488
	Mauna Loa (Kukui)	1,430	436
<b>O'ahu</b>	Ka'ala	4,003	1,220
	Pu'u Kalena	3,504	1,068
	Kōnahuanui	3,150	960
	Tantalus	2,013	614
	Olomana	1,643	501
	Koko Crater (Kohelepelepe)	1,208	368
	Nu'uuanu Pali Lookout	1,186	361
	Diamond Head	760	232
	Koko Head	642	196
Punchbowl	500	152	

CONTINUES ON THE NEXT PAGE

### 3.1.4

## CONTINUED

Island and Summit		Feet	Meters
<b>Kaua'i</b>	Kawaikini	5,243	1,598
	Wai'ale'ale	5,148	1,569
	NāmoloKama Mountain	4,421	1,348
	Kalalau Lookout	4,120	1,256
	Hā'upu	2,297	700
	Sleeping Giant (Nounou)	1,241	378
<b>Ni'ihau</b>	Paniau	1,250	381
<b>Lehua</b>		699	213
<b>Ka'ula</b>		548	167
<b>Nihoa</b>	Millers Peak	903	275
<b>Necker Island</b>	Summit Hill	276	84
<b>French Frigate Shoal</b>	La Perouse Pinnacles	120	37
<b>Gardner Pinnacles</b>		190	58
<b>Maro Reef</b>		Awash	Awash
<b>Laysan Island</b>		40	12
<b>Lisianski Island</b>		40	12
<b>Pearl and Hermes Atoll</b>		10	3
<b>Midway Islands</b>		12	4
<b>Kure Atoll</b>		20	6

1. According to the 1995 Guinness Book of Records (p. 147), "The world's tallest mountain measured from its submarine base (3,280 fathoms) in the Hawaiian Trough to its peak is Mauna Kea... with a combined height of 33,480 ft., of which 13,796 ft. are above sea level."

2. Guinness (p. 142-143) describes Mauna Loa as having "dimensions, but not height, [which] exceed those of Mt. Everest... The axes of its elliptical base, 16,322 ft. below sea level, have been estimated at 74 miles and 53 miles."

SOURCE: HAWAII STATE DEPARTMENT OF ACCOUNTING AND GENERAL SERVICES, SURVEY DIVISION, DATA PROVIDED APRIL 21, 1992; U.S. NATIONAL CARTOGRAPHIC INFORMATION CENTER, DATA PROVIDED OCTOBER 11, 1978; U.S. GEOLOGICAL SURVEY TOPOGRAPHIC MAPS, 1981-1984; HAWAIIAN GOVERNMENT SURVEY (FOR NIHOA AND MOLOKINI); U.S.S. Tanager Survey, 1923 (FOR NECKER ISLAND, FRENCH FRIGATE SHOALS, LAYSAN, LISIANSKI, PEARL, HERMES ATOLL AND KURE ATOLL).

## 3.1.5

## MISCELLANEOUS GEOGRAPHIC STATISTICS BY ISLAND

	State	Hawai'i	Maui	Kaho'olawe	Lāna'i	Molokai	O'ahu	Kaua'i	Ni'ihau
Extreme Length (miles)	NA	93.0	48.0	11.0	18.0	38.0	44.0	33.0	8.0
Extreme Width (miles)	NA	76.0	26.0	6.0	13.0	10.0	30.0	25.0	6.0
Miles of Sea Cliffs with Heights of 1,000 Feet or More <sup>1</sup>	33.0	4.0	-	-	1.0	14.0	-	11.0	3.0
Miles from Coast of Most Remote Point	28.5	28.5	10.6	2.4	5.2	3.9	10.6	10.8	2.4
Percent of Area Within 5 Miles of Coast	48.6	30.0	76.1	100.0	100.0	100.0	79.0	65.0	100.0
Percent of Area with Elevation of Less than 500 Feet	20.8	12.0	24.9	38.9	24.8	37.3	45.3	35.6	78.2
Percent of Area with Elevation of 2,000 Feet or More	50.9	68.4	41.4	0.0	6.3	17.8	4.6	24.0	0.0
Approximate Mean Altitude (feet)	3,030.0	3,950.0	2,390.0	600.0	1,140.0	1,150.0	860.0	1380.0	530.0
Percent of Area with Slope Less than 10%	63.5	76.0	38.5	60.0	61.0	53.0	42.5	33.5	68.0
Percent of Area with Slope 20% or more	17.0	4.0	36.0	9.0	16.0	26.0	45.5	50.5	12.5

1. According to Lee S. Motteier, Geography and Map Division, Bernice P. Bishop Museum, the sea cliffs along the northeastern coast of Molokai between Umilehi Point and Pu'uuka'ōkū Point drop 3,250 feet at an average slope of 58 degrees. These cliffs have been described by The Guinness Book of World Records (1995 edition, p. 154) as "the highest sea cliffs in the world."

NA: Not applicable.

SOURCE: HAWAII STATE DEPARTMENT OF PLANNING AND ECONOMIC DEVELOPMENT, HAWAII, THE NATURAL ENVIRONMENT (1974), P. 19; AND U.S. GEOLOGICAL SURVEY, ELEVATIONS AND DISTANCES IN THE UNITED STATES (1978), P. 4-5.



3.1.6

**TEMPERATURE AND PRECIPITATION  
AVERAGES AND EXTREMES, MAUI COUNTY**

<b>TEMPERATURE</b>	<b>Station</b>	<b>Elevation (feet)</b>	<b>Annual Average</b>		<b>Warmest Month</b>		<b>Coollest Month</b>		<b>Record High</b>		<b>Record Low</b>		
			<b>High</b>	<b>Low</b>	<b>High</b>	<b>Low</b>	<b>High</b>	<b>Low</b>	<b>°F</b>	<b>Date</b>	<b>°F</b>	<b>Date</b>	
	Haleakalā Ranger Station	6,962	57.5	51.0	66.2	48.8	59.6	42.3	80	10/06/73	27	02/26/65	
	Hāna Airport	75	77.2	71.0	82.9	71.6	77.7	64.4	94	11/03/79	50	02/19/58	
	Kahului Airport	51	79.7	71.8	88.0	71.4	80.7	63.0	97	08/22/15	48	01/20/69	
	Kailua (NE Maui, Inland)	700	72.2	65.9	77.9	65.9	72.7	59.2	90	08/30/47	44	03/16/09	
	Kapalua Airport	240	78.9	72.0	85.7	72.0	78.2	65.8	98	04/20/05	58	12/31/14	
	Kula Hospital	3,030	66.5	59.9	75.2	57.8	68.1	51.7	91	06/19/35	38	01/22/97	
	Moloka'i Airport	443	78.5	70.2	85.6	71.1	77.6	62.9	93	08/18/18	15	01/23/19	
	Lāna'i Airport	1,300	75.1	67.8	83.5	66.7	76.0	59.7	93	07/02/04	42	01/10/93	
<b>PRECIPITATION</b>	<b>Station</b>	<b>Annual Avg Inches</b>	<b>Days Precip ≥ 0.01 in.</b>	<b>Wettest Year</b>		<b>Driest Year</b>		<b>Wettest Month</b>		<b>Driest Month</b>		<b>1 Day Record</b>	
				<b>Inches</b>	<b>Year</b>	<b>Inches</b>	<b>Year</b>	<b>Inches</b>	<b>Month</b>	<b>Inches</b>	<b>Month</b>	<b>Inches</b>	<b>Date</b>
	Haleakalā Ranger Station	49.74	140	121.16	1980	17.71	1962	7.65	Mar	1.38	Jun	18.50	01/09/80
	Hāna Airport	79.23	269	126.23	1965	48.36	2001	8.99	Mar	4.31	Jun	19.45	03/30/07
	Kahului Airport	17.83	91	40.63	1989	5.04	2012	3.35	Dec	0.20	Jun	6.40	12/20/17
	Kailua (NE Maui, Inland)	107.89	282	216.65	1914	75.27	1933	11.35	Mar	6.82	Jun	15.20	11/15/65
	Kapalua Airport	29.01	158	48.43	2004	18.92	2000	4.58	Dec	0.91	Sept	8.14	03/24/06
	Kula Hospital	30.76	88	70.72	1968	11.59	1998	3.93	Dec	1.48	Aug	9.01	12/20/55
	Moloka'i Airport	24.68	111	50.34	2004	7.15	2012	4.29	Dec	0.48	Jun	9.03	02/12/89
	Lāna'i Airport	15.59	67	47.66	1951	5.28	1999	2.47	Jan	0.44	Jul	10.45	11/10/55

Note: 1981-2010 Climate Normals.

SOURCE: U.S. DEPARTMENT OF COMMERCE, NATIONAL OCEANIC AND ATMOSPHERIC ADMINISTRATION, WESTERN REGIONAL CLIMATE CENTER, HAWAII CLIMATE SUMMARIES.

3.1.7

**MONTHLY RAINFALL AND TEMPERATURE AT SPECIFIED LOCATIONS  
MAUI COUNTY, 2018**

Rainfall¹	Jan	Feb	Mar	Apr	May	June	July	Aug	Sept	Oct	Nov	Dec	Annual
<b>Maui</b>													
Ha'ikū	2.17	3.94	3.52	8.85	5.72	3.12	4.30	13.84	7.56	8.60	5.92	6.52	74.06
Haleakalā Ranger Station	0.49	7.54	2.83	8.05	1.44	0.49	1.56	15.37	7.46	2.22	NA	NA	47.45
Hāna Airport	2.79	9.51	12.86	10.58	7.33	1.74	4.99	15.71	7.83	15.24	10.57	4.06	103.21
Kahului Airport	0.27	5.58	2.20	4.49	1.19	0.01	0.27	2.35	1.97	1.82	1.43	0.54	22.12
Kailua (NE Maui)	2.49	9.39	7.42	11.38	11.33	3.80	3.91	19.50	7.24	2.57	1.68	6.84	94.14
Kapalua Airport	1.23	5.16	1.85	8.06	1.20	1.18	1.66	4.04	7.91	2.44	0.91	3.07	38.71
Kula Branch Station	2.34	8.90	3.05	5.38	1.62	0.04	0.48	6.51	3.50	2.41	0.40	0.03	34.66
Makena Golf Course	0.00	4.91	1.22	2.98	1.98	0.20	1.17	1.83	1.94	1.97	0.10	0.15	20.15
'Ohe'o	3.92	5.85	5.31	7.04	2.87	3.04	4.05	6.08	4.93	12.78	3.44	3.23	62.54
Pa'akea	4.78	8.06	NA	8.41	19.44	9.18	21.22	36.72	21.37	NA	0.44	6.27	158.82
Pukalani	0.24	4.63	1.59	5.09	2.45	0.55	2.10	5.49	1.61	3.61	4.14	6.16	37.66
'Ulupalakua Ranch	0.08	6.36	2.23	7.46	2.25	0.67	2.68	3.91	5.30	4.56	0.59	0.09	37.58
Waihe'e Valley	0.72	6.88	4.56	11.10	6.03	0.30	1.48	6.67	4.58	11.45	4.84	4.50	63.13
Wailuku	0.18	2.17	4.24	14.57	2.85	0.07	1.01	4.14	4.67	5.45	4.87	3.04	47.26
<b>Moloka'i</b>													
Maunaloa	0.77	8.33	1.43	1.29	1.50	1.00	0.61	3.52	6.99	5.57	0.89	0.66	37.37
Moloka'i Airport	0.00	2.96	1.10	3.59	0.71	0.19	0.56	1.42	3.86	4.27	1.09	1.37	21.12
Kaunakakai	0.00	4.45	1.24	3.41	0.15	0.00	0.21	0.91	3.04	1.62	0.00	0.17	15.20

3.1.7

CONTINUED

Temperature <sup>1,2</sup>	Jan	Feb	Mar	Apr	May	June	July	Aug	Sept	Oct	Nov	Dec	Annual
<b>Maui</b>													
Haleakalā Ranger Station	54.1	51.1	51.5	54.2	55.6	57.4	57.3	59.3	59.1	56.5	NA	NA	55.6
Hāna Airport	72.2	71.9	71.5	74.2	75.0	76.2	77.6	77.9	78.1	77.3	75.3	73.9	75.1
Kahului Airport	72.2	73.1	72.8	75.6	74.6	77.7	80.6	81.1	81.2	80.6	77.6	75.5	76.9
Kailua (NE Maui)	67.4	67.2	66.7	70.0	70.3	71.8	73.4	73.4	73.7	72.7	69.6	68.1	70.4
Kapalua Airport	72.6	73.0	72.6	74.8	75.6	78.0	79.8	79.6	78.7	78.4	76.2	74.5	76.2
Kula Branch Station	61.0	61.3	61.2	63.4	64.1	65.5	67.2	67.8	67.7	66.8	64.2	62.5	64.4
Kula Hospital	59.3	60.9	60.2	63.0	63.1	64.3	66.1	66.9	66.5	65.4	62.5	60.6	63.2
Makana Golf Course	72.0	72.2	72.2	74.6	75.0	76.9	78.1	78.5	79.4	77.5	75.5	73.0	75.4
'Ohe'o	72.7	73.4	74.8	NA	82.0	81.5	82.4	84.5	79.5	78.1	77.0	75.4	78.3
<b>Moloka'i</b>													
Moloka'i Airport	70.0	71.7	72.2	75.3	76.6	79.4	81.6	81.6	80.1	79.5	76.6	73.3	76.5

1. Individual months not used for annual or monthly statistics if more than 5 days are missing.

2. Average temperature for the month.

NA: Not available

SOURCE: U.S. DEPARTMENT OF COMMERCE, NATIONAL OCEANIC AND ATMOSPHERIC ADMINISTRATION, WESTERN REGIONAL CLIMATE CENTER, HAWAII CLIMATE SUMMARIES.

### 3.1.8

## ANNUAL RAINFALL AND TEMPERATURE AT SPECIFIED LOCATIONS, MAUI COUNTY

Annual Rainfall, Inches					
	2014	2015	2016	2017	2018
<b>Maui</b>					
Ha'ikū	51.19	52.28	56.14	62.50	74.06
Haleakalā Ranger Station	60.64	64.78	58.41	47.64	47.45
Hāna Airport	76.85	71.25	89.81	60.57	103.21
Kahului Airport	23.25	29.26	19.00	26.10	22.12
Kailua (NE Maui)	100.52	113.42	107.94	68.31	94.14
Kapalua Airport	36.91	32.99	30.98	35.36	38.71
Kula Branch Station	39.26	39.86	26.88	31.06	34.66
Makena Golf Course	29.82	6.79	16.72	19.01	20.15
'Ohe'o	70.42	81.89	70.65	66.76	62.54
Pa'akea	118.74	178.33	186.39	114.23	158.82
Pukalani	53.88	33.21	41.98	38.77	37.66
'Ulupalakua Ranch	42.86	42.76	29.71	40.90	37.58
Waihe'e Valley	58.75	63.72	62.42	58.23	63.13
Wailuku	22.09	36.03	24.01	41.97	47.26
<b>Moloka'i</b>					
Maunaloa	36.43	27.01	25.25	22.30	37.37
Moloka'i Airport	40.38	22.52	14.96	18.57	21.12
Kaunakakai	19.59	13.90	9.10	12.55	15.20
Average Annual Temperature, Fahrenheit					
	2014	2015	2016	2017	2018
<b>Maui</b>					
Haleakalā Ranger Station	54.7	55.0	54.7	54.4	55.6
Hāna Airport	74.9	75.4	74.7	74.1	75.1
Kahului Airport	77.0	77.2	77.2	76.7	76.9
Kailua (NE Maui)	70.2	71.0	70.2	69.4	70.4
Kapalua Airport	76.1	76.9	76.4	76.3	76.2
Kula Branch Station	64.1	64.6	64.2	63.8	64.4
Kula Hospital	63.2	63.5	63.3	62.4	63.2
Makena Golf Course	75.5	72.8	76.7	75.5	75.4
'Ohe'o	75.5	73.9	77.2	76.4	78.3
<b>Moloka'i</b>					
Moloka'i Airport	74.9	75.2	76.5	76.4	76.5

SOURCE: U.S. DEPT. OF COMMERCE, NATIONAL OCEANIC AND ATMOSPHERIC ADMINISTRATION, NATIONAL CLIMATIC DATA CENTER.

### 3.2.1

## TRENDS IN REAL PROPERTY TAX BASE MAUI COUNTY

*Gross valuation in thousands  
As of mid-April*

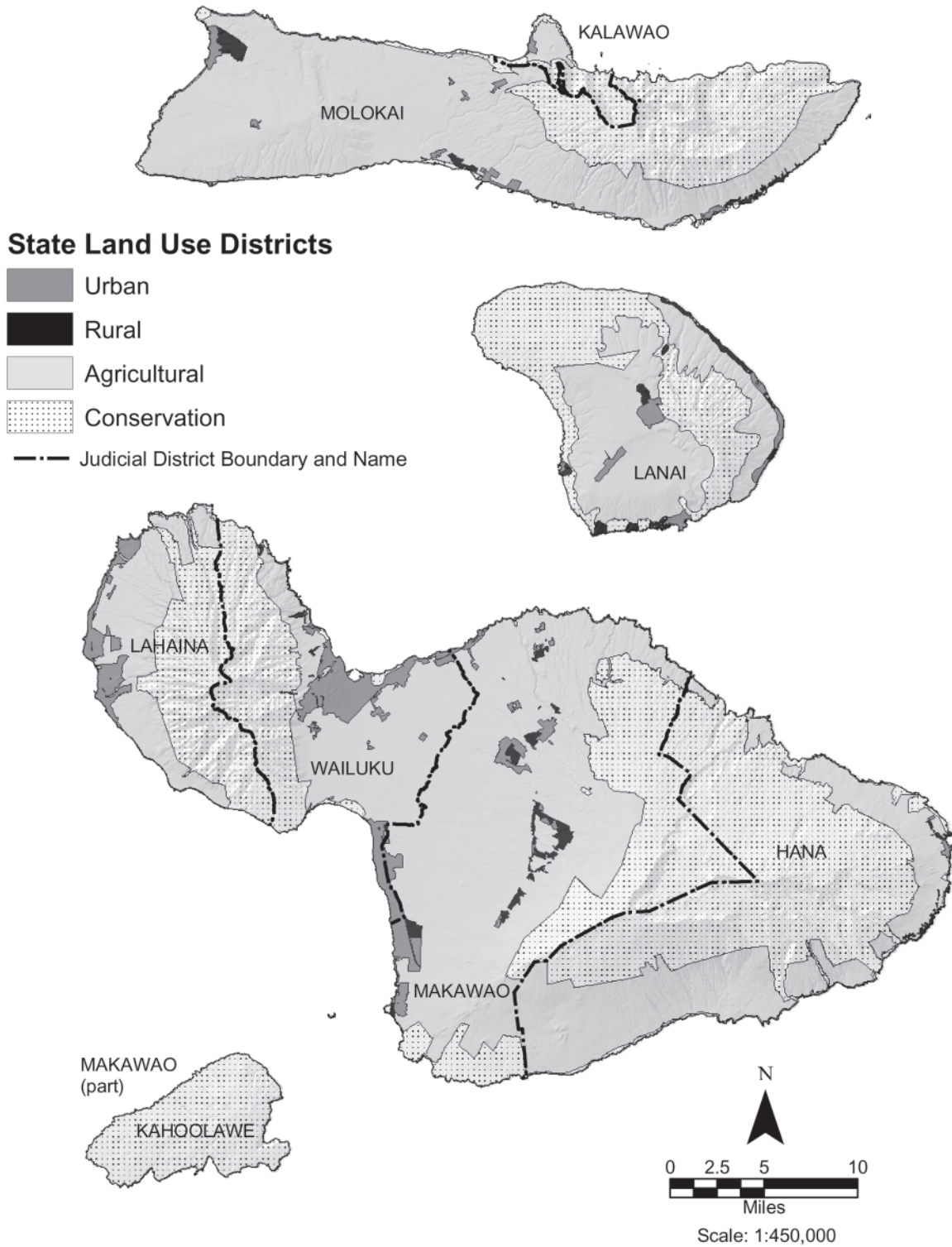
	2013	2014	2015	2016	2017	2018
<b>Residential</b>	<b>5,893,266</b>	<b>6,028,645</b>	<b>6,711,804</b>	<b>7,254,893</b>	<b>7,695,201</b>	<b>8,370,124</b>
Land	3,601,197	3,686,699	4,070,656	4,261,638	4,530,061	4,766,451
Improvement	2,292,069	2,341,946	2,641,148	2,993,255	3,165,140	3,603,673
<b>Apartment</b>	<b>4,916,549</b>	<b>5,234,865</b>	<b>5,946,767</b>	<b>6,277,268</b>	<b>6,587,930</b>	<b>6,702,595</b>
Land	1,623,663	1,726,925	1,848,829	1,895,057	1,984,330	1,953,358
Improvement	3,292,887	3,507,941	4,097,938	4,382,212	4,603,600	4,749,237
<b>Commercial</b>	<b>2,118,943</b>	<b>2,172,533</b>	<b>3,181,514</b>	<b>3,683,412</b>	<b>3,486,977</b>	<b>3,236,145</b>
Land	1,196,976	1,222,050	2,043,733	2,316,865	2,076,444	1,877,155
Improvement	921,968	950,483	1,137,781	1,366,546	1,410,533	1,358,990
<b>Industrial</b>	<b>1,793,130</b>	<b>1,628,188</b>	<b>1,869,580</b>	<b>2,352,738</b>	<b>2,217,395</b>	<b>2,337,098</b>
Land	1,115,918	919,840	1,100,212	1,517,727	1,326,758	1,406,003
Improvement	677,213	708,349	769,368	835,011	890,637	931,095
<b>Agricultural</b>	<b>3,401,327</b>	<b>3,515,172</b>	<b>3,762,908</b>	<b>4,000,605</b>	<b>4,126,331</b>	<b>4,577,965</b>
Land	2,089,824	2,151,407	2,241,518	2,256,689	2,271,149	2,582,197
Improvement	1,311,504	1,363,765	1,521,390	1,743,916	1,855,182	1,995,768
<b>Conservation</b>	<b>500,531</b>	<b>471,161</b>	<b>490,533</b>	<b>525,273</b>	<b>518,667</b>	<b>525,555</b>
Land	295,211	281,645	285,855	305,577	295,147	307,453
Improvement	205,320	189,516	204,678	219,696	223,520	218,102
<b>Hotel/Resort</b>	<b>7,404,724</b>	<b>8,884,090</b>	<b>9,378,253</b>	<b>9,769,407</b>	<b>10,037,520</b>	<b>2,343,052</b>
Land	1,450,145	1,783,169	1,858,055	1,835,145	1,740,596	626,233
Improvement	5,954,578	7,100,922	7,520,198	7,934,261	8,296,924	1,716,819
<b>Homeowner</b>	<b>12,172,724</b>	<b>12,911,672</b>	<b>14,318,802</b>	<b>15,493,779</b>	<b>15,904,774</b>	<b>16,705,051</b>
Land	5,529,016	5,988,415	6,645,531	6,994,332	7,202,954	7,547,994
Improvement	6,643,709	6,923,257	7,673,272	8,499,447	8,701,820	9,157,058
<b>Time Share</b>	<b>1,484,089</b>	<b>1,595,127</b>	<b>1,773,726</b>	<b>1,908,345</b>	<b>1,982,492</b>	<b>2,271,896</b>
Land	169,889	191,541	202,790	203,455	203,455	240,604
Improvement	1,314,201	1,403,586	1,570,936	1,704,890	1,779,037	2,031,292
<b>Commercialized Residential</b>	<b>94,183</b>	<b>109,353</b>	<b>120,166</b>	<b>163,441</b>	<b>172,475</b>	<b>198,097</b>
Land	41,861	57,361	58,698	77,084	81,064	90,607
Improvement	52,323	51,992	61,469	86,357	91,411	107,490
<b>Short Term Rental<sup>1</sup></b>						<b>8,586,805</b>
Land						1,507,468
Improvement						7,079,336
<b>Total</b>	<b>39,779,467</b>	<b>42,550,806</b>	<b>47,554,054</b>	<b>51,429,159</b>	<b>52,729,762</b>	<b>55,854,383</b>

1. New category as of 2018.

SOURCE: CITY AND COUNTY OF HONOLULU, DEPARTMENT OF BUDGET AND FISCAL SERVICES, REAL PROPERTY ASSESSMENT DIVISION.

3.2.2

LAND USE DISTRICTS, MAUI COUNTY



SOURCE: HAWAII STATE OFFICE OF PLANNING, HAWAII STATEWIDE GIS PROGRAM, APRIL 2013.

### 3.2.3

## ESTIMATED ACREAGE OF LAND USE DISTRICTS BY ISLAND, 2017

*Total acreage, including inland water, as classified by the Hawai'i State Land Use Commission under the provisions of Chapter 205, Hawai'i Revised Statutes, as amended; all data are approximate*

Classification by State Land Use Commission <sup>2</sup>					
Island	Total Area <sup>1</sup>	Urban	Conservation	Agricultural	Rural
Hawai'i <sup>3</sup>	2,573,400	54,145	1,304,347	1,212,886	2,023
Maui	465,800	24,191	194,836	242,720	4,053
Lāna'i	90,500	3,330	38,197	46,566	2,407
Moloka'i	165,800	2,539	49,768	111,627	1,866
Kaho'olawe	28,800	0	28,800	0	0
O'ahu	386,188	101,661	156,829	127,698	0
Kaua'i <sup>4</sup>	353,900	14,834	198,769	139,044	1,253
Ni'ihau <sup>4</sup>	45,700	0	0	45,700	0
Ka'ula and Lehua	400	0	400	0	0
Other islands <sup>5</sup>	1,900	0	1,900	0	0
<b>State Total</b>	<b>4,112,388</b>	<b>200,700</b>	<b>1,973,846</b>	<b>1,926,240</b>	<b>11,602</b>

1. These totals differ somewhat from the official figures based on measurements by the Geography Division of the U.S. Bureau of the Census, cited in Section 5.

2. For definitions, see Hawai'i Revised Statutes, Section 205-2.

3. County records update indicated 5 acres changed from Agricultural to Urban.

4. May be revised, pending updates of County records.

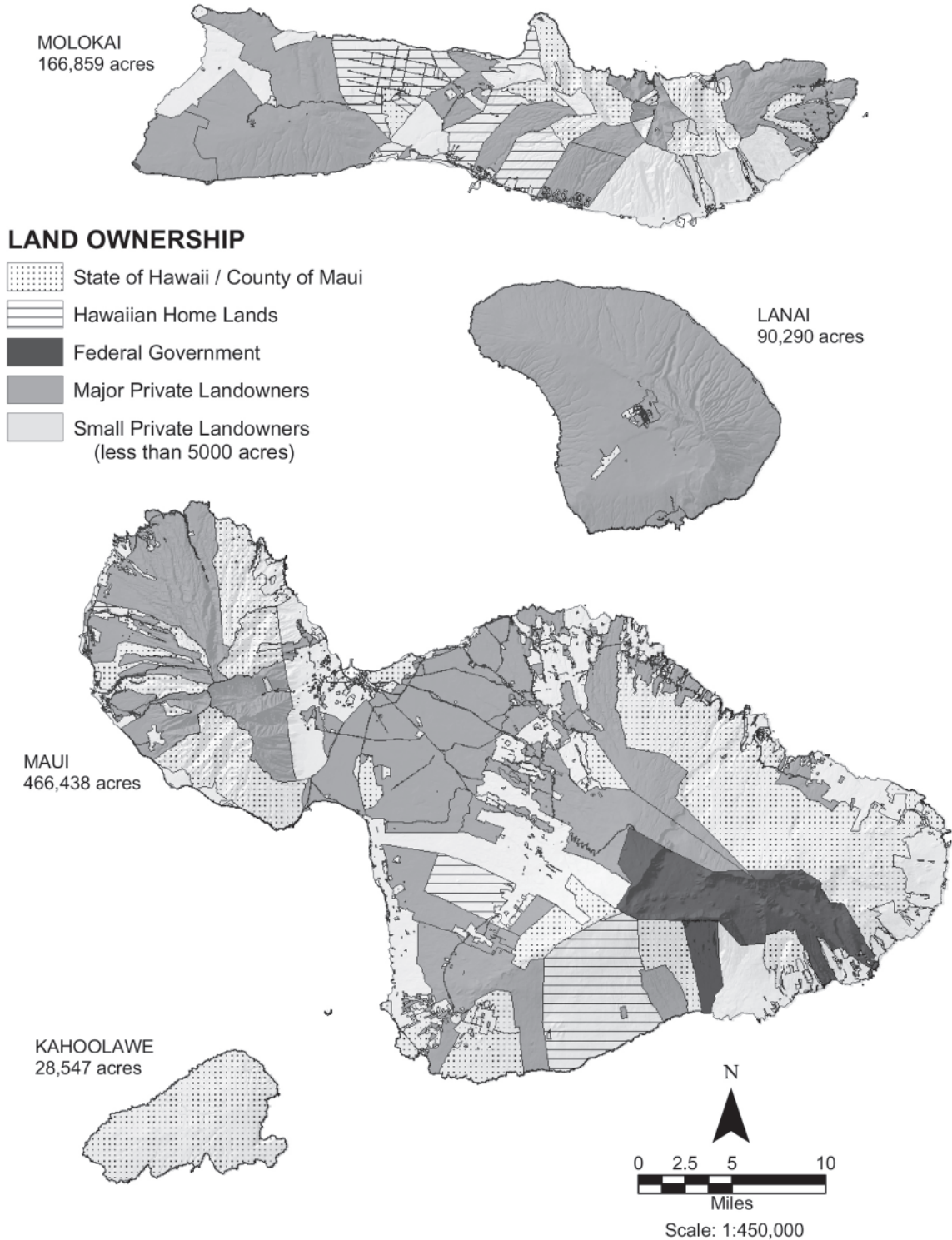
5. The Northwestern Hawaiian Islands, from Nihoa to Kure Atoll, excluding Midway.

SOURCE: HAWAII STATE DEPARTMENT OF BUSINESS, ECONOMIC DEVELOPMENT AND TOURISM, LAND USE COMMISSION.



### 3.2.4

## LAND OWNERSHIP, MAUI COUNTY



SOURCE: HAWAII'S STATE OFFICE OF PLANNING, HAWAII'S STATEWIDE GIS PROGRAM, AUGUST 2013.



### 3.2.5

## NUMBER OF LAND RECORDS BY COUNTY

*For fiscal year ending June 30*

Year	Maui	Hawai'i	Honolulu	Kaua'i	State Total
1995	56,726	129,856	242,285	27,136	456,003
1996	57,665	130,623	246,933	27,916	463,137
1997	58,624	131,981	251,731	28,876	471,212
1998	59,505	132,605	253,886	29,126	475,122
1999	60,490	133,322	255,589	29,336	478,737
2000	61,897	134,308	258,121	29,553	483,879
2001	62,873	135,499	259,456	29,818	487,646
2002	NA	NA	260,662	30,097	NA
2003	60,472	133,321	252,435	28,432	474,660
2004	60,537	134,290	255,029	28,772	478,628
2005	61,273	134,021	258,415	28,936	482,645
2006	62,521	134,885	262,479	29,423	489,308
2007	64,597	136,612	268,441	30,831	500,481
2008	65,938	138,281	271,859	31,822	507,900
2009	67,981	139,167	274,483	32,398	514,029
2010	68,930	139,649	276,582	32,870	518,031
2011	70,365	139,883	277,581	32,993	520,822
2012	71,101	140,008	278,825	34,023	523,957
2013	71,234	140,196	279,754	34,172	525,356
2014	71,515	140,257	281,463	34,124	527,359
2015	71,907	140,336	285,092	33,370	530,705
2016	71,992	140,753	287,115	33,207	533,067
2017	72,421	140,858	289,564	33,503	536,346
2018	73,418	140,370	291,069	35,569	540,426

NA: Not available

SOURCE: CITY AND COUNTY OF HONOLULU, DEPARTMENT OF BUDGET & FISCAL SERVICES, REAL PROPERTY ASSESSMENT DIVISION.

### 3.2.6

## NATIONAL AND STATE HISTORIC PLACES MAUI COUNTY

---

### Island of Maui

'Alae Petroglyphs	Kamaole House Site
Alena Habitation Site	Kauhihale Complex
Asa Baldwin Residence	Kaupō School
Bank of Hawaii- Ha'ikū Branch	Ka'umi'umiua Heiau
Cave of Seven Coffins	Kawaipapa Complex
Chee Kung Tong Society Hall	Kearae School
Crater Historic District (Haleakala National Park)	Keone'ō'io Archaeological District
Frank Baldwin/H.F. Rice Residence	Ket Hing Society Hall
Fred C. Baldwin Memorial Home	Kilolani Congregational Church
Gomes Residence	King Kamehameha III's Royal Residential Complex
H. Perrine Baldwin High School	Kīpahulu Historic District
Haiku Fruit & Packing Co. Manager's House	Kīpapa Archaeological District
Haiku Mill	Kula Sanitorium
Hale Hō'ike'ike (Old Bailey House	Lahaina Historic District
Hale Pa'i	Lo'alo'a Heiau
Haleki'i-Pihana Heiau	Luala'ilua Cave
Hale o Lono Heiau	Luala'ilua Heiau
Hāmoa Complex	Luala'ilua Terrace Complex
Hāna Belt Road	Lucy Kaiewe Searle Residence
Hāna Hongwanji Temple	Ma'alaea General Store
Hāna District Police Station & Courthouse	Makawao Union Church
Hāna Store	Maui Jinsha Mission
Hanamau'uloa Complex	Moku'ula
Hardy House	Molohai Heiau
Holy Ghost Catholic Church	Naniloa Drive Overpass Bridge
Honokalani Village	Pā'ia Mantokuji Soto Mission
Honokowai Petroglyphs	Pā'ia School
'Īao Theater	Papakea Heiau
Ka'ahumanu Church	Papakea Petroglyphs
Kahikinui House	Pi'ilanihale Heiau
Kahului Railroad Station	Pioneer Mill Company Office
Kaiapuni Ko'a	Pu'unēnē School
Kaimupe'elua Heiau	Wahene Platform
Kalepolepo Fishpond	Wai'ale Bridge
Kaluakakalioa Cave	Waihe'e Church
Kaluanui Heiau Complex	Waikapū Stone Church

### 3.2.6

## CONTINUED

---

### Island of Maui (Continued)

Wailuku Civic Center District  
Wailuku School  
Wānanalua Congregational Church  
William K. Kaluakini Residence  
Wo Hing Society Hall

### Island of Kaho‘olawe

Kaho‘olawe Archaeological District

### Island of Lāna‘i

Keāliakapu Complex-Kaunolu Village Site  
Pu‘u Pehe Platform

### Island of Moloka‘i

Ahahui Kalaniana‘ole  
‘Ahina Heiau  
Ali‘i Pond  
Anahaki Gulch Complex  
Ananaluwahine Cave  
California Packing Corp.'s Plantation Manager's Res.  
Fishing shrine at Keawa Ka Lani

### FISHPONDS

Halemahana Fishpond  
Honouliwai Fishtrap  
Ipukaiole Fishpond  
Kahinapōhaku Fishpond  
Kainalu Fishpond  
Kalua‘aha Fishpond  
Kipapa Fishpond  
Koloko‘eli Fishpond  
Mahilika Fishpond  
Mikiawa Fishpond  
Pahiomu Fishpond  
Panahana Fishpond  
Waiakea Fishpond  
Weheleau‘ulu Fishpond

Hökūkano ‘Ualapu‘e Complex  
‘Ili‘ili‘ōpae Heiau  
Kahokukano Heiau  
Kalauonākukui Heiau  
Kaluakapi‘ioho Heiau  
Keawanui Fishpond  
Kukui Heiau  
Pāku‘i Heiau  
Pu‘u‘ōlelo Heiau  
‘Ualapu‘e Fishpond  
Kaheu Gulch Habitation Site  
Kahili Koa  
Kalaupapa Leprosy Settlement  
Kalua‘aha Church  
Kalualohe Complex  
Kamaka‘ipo Gulch Habitation Site  
Kamaka‘ipo Lowlands Habitation Site  
Kamaka‘ipo Point Fishing Shrine  
Kape‘elua Complex  
Kapukikani Heiau  
Kaupikiawa Cave  
Kawela archeological sites  
Keawakalae Ko‘a  
Kilohana School  
Luahine Maika (Bowling) Run  
Moloka‘i Public Library  
Nanahoa Complex  
Nihoa Complex  
R. W. Meyer Sugar Mill  
Sandalwood Pit  
Southwest Moloka‘i Archeological District  
St. Joseph Catholic Church  
U.S. Coast Guard Moloka‘i Light

---

SOURCE: HAWAII‘I STATE DEPARTMENT OF LAND AND NATURAL RESOURCES, STATE HISTORIC PRESERVATION DIVISION.

### 3.2.7

## DEPARTMENT OF HAWAIIAN HOME LANDS ACREAGE, LESSEES, AND APPLICANTS BY ISLAND

*The Department of Hawaiian Home Lands administers land set aside for the benefit of qualified Native Hawaiians, who receive homestead leases and financial assistance from the Department  
As of June 30, 2017*

	Maui	Lānaʻi	Molokaʻi	Hawaiʻi	Kauaʻi	Oʻahu	State Total
<b>Acreage</b>							
General Leases	60	0	352	2,203	78	367	3,060
Licenses	NA	NA	NA	NA	NA	NA	NA
Right of Entry Permits	6,353	25	610	19,425	692	1,813	28,918
<b>Homestead Leases</b>							
Residential	1,267	29	395	1,709	697	4,270	8,367
Agricultural	65	0	420	508	46	60	1,099
Pastoral	75	0	27	307	1	0	410
<b>Applications<sup>1</sup></b>							
Residential	3,810	76	786	5,790	1,674	10,784	22,920
Agricultural	4,673	0	1,088	7,157	2,249	3,738	18,905
Pastoral	615	0	199	1,974	322	0	3,110

NA: Not available

1. The 44,935 applications are held by 28,123 applicants.

SOURCE: HAWAIIʻI STATE DEPARTMENT OF HAWAIIAN HOMELANDS, ANNUAL REPORTS AND RECORDS.

## 3.2.8

## DISPOSITION OF STATE LANDS MAUI COUNTY, 2018

Document Number	Permittee or Grantee Name	Location	Acres	Use	Annual Rent
<b>General Leases &amp; Term Easements</b>					
GL6115	Steven Robert Campbell and Deana Darlene Campbell Trustees	Lahaina	0.001	Seawall	4,800*
<b>Executive Orders - Set Asides</b>					
4568	Department of Transportation	Kalulu and Kamoku, Lanai	507.795	Setting aside land for public purposes (For airport purposes)	
4544	County of Maui	Hana	2.250	Setting aside land for public purposes (For community center and ancillary purposes)	
4550	DLNR, Division of State Parks	Makawao	7.970	Setting aside land for public purposes (For Polipoli Spring State Recreation Area)	
4551	Department of Transportation	Wailuku	0.485	Setting aside land for public purposes (For airport purposes)	
4552	Department of Transportation	Lahaina	57.296	Setting aside land for public purposes (For airport and allied purposes)	
4562	Department of Transportation	Wailuku	13.367	Setting aside land for public purposes (For addition to Kahului Airport)	
<b>Executive Orders - Cancellations and Withdrawals</b>					
4567	Department of Transportation	Kalulu and Kamoku, Lanai	507.795	Cancellation of Governor's Executive Order No. 1248 dated 3/19/1948; No. 1279 dated 11/19/1948 & No. 2211 dated 7/1/1965	
4549	State of Hawaii, Board of Land and Natural Resources	Makawao	7.970	Withdrawing land from the operation of Governor's Proclamation of Forest Reserve dated 9/11/1912	

\* Direct.

SOURCE: STATE OF HAWAII, DEPARTMENT OF LAND AND NATURAL RESOURCES.

## 3.2.9

## SINGLE FAMILY HOME AND CONDOMINIUM SALES BY AREA, MAUI COUNTY, 2018

Area	# Sales	% Change Last Yr	Average Price	% Change Last Yr	Median Price	% Change Last Yr	Total Volume	% Change Last Yr
<b>Single Family Homes</b>								
Ha'ikū	92	8%	\$956,427	8%	\$842,500	12%	\$87,991,251	17%
Hāna	20	100%	\$1,019,245	-32%	\$762,500	-34%	\$20,384,890	35%
Kā'anapali	36	57%	\$2,117,367	6%	\$1,837,500	3%	\$76,225,202	66%
Kahakuloa	2	100%	\$875,000	52%	\$875,000	52%	\$1,750,000	204%
Kahului	137	-8%	\$672,956	10%	\$677,500	13%	\$92,194,990	1%
Kapalua	8	0%	\$3,867,913	48%	\$2,840,000	14%	\$30,943,300	48%
Kīhei	171	-10%	\$1,120,494	22%	\$700,000	0%	\$191,604,453	10%
Kula/Ulupalakua/Kanaio	71	-10%	\$1,094,835	8%	\$950,000	12%	\$77,733,317	-3%
Lahaina	53	-19%	\$1,725,694	5%	\$850,000	-23%	\$91,461,800	-14%
Lāna'i	21	11%	\$548,000	37%	\$460,000	20%	\$11,508,000	51%
Mā'alaea	1	0%	\$2,000,000	-43%	\$2,000,000	-43%	\$2,000,000	-43%
Makawao/Olinda/Hali'imaile	63	10%	\$745,644	-3%	\$648,500	2%	\$46,975,557	6%
Maui Meadows	31	11%	\$1,211,923	-12%	\$1,325,000	4%	\$37,569,600	-3%
Moloka'i	31	41%	\$486,018	3%	\$320,000	-18%	\$15,066,551	45%
Nāpili/Kahana/Honokōwai	32	-24%	\$1,002,269	4%	\$924,000	5%	\$32,072,600	-21%
Olowalu	1	0%	\$1,360,000	70%	\$1,360,000	70%	\$1,360,000	70%
Pukalani	41	-23%	\$783,310	2%	\$704,000	4%	\$32,115,700	-21%
Spreckelsville/Pā'ia/Ku'au	28	17%	\$1,161,743	-56%	\$795,000	-35%	\$32,528,812	-49%
Wailea/Mākena	34	21%	\$3,173,324	-29%	\$1,805,000	-20%	\$107,893,000	-14%
Wailuku	264	23%	\$659,653	2%	\$658,425	7%	\$174,148,488	25%
<b>Maui Summary</b>	<b>1,137</b>	<b>3%</b>	<b>\$1,023,331</b>	<b>0%</b>	<b>\$710,000</b>	<b>2%</b>	<b>\$1,163,527,511</b>	<b>3%</b>
<b>Condominiums</b>								
Kā'anapali	173	34%	\$1,104,534	3%	\$801,000	3%	\$191,084,387	39%
Kahului	35	0%	\$159,829	21%	\$125,000	32%	\$5,594,000	21%
Kapalua	45	-18%	\$2,062,936	3%	\$1,031,250	9%	\$92,832,112	-15%
Kīhei	611	5%	\$490,177	7%	\$410,000	9%	\$299,497,868	12%
Lahaina	87	16%	\$633,595	18%	\$526,500	4%	\$55,122,773	37%
Lāna'i	4	-60%	\$2,050,000	67%	\$1,625,000	82%	\$8,200,000	-33%
Mā'alaea	46	7%	\$441,590	21%	\$427,500	32%	\$20,313,150	29%
Moloka'i	15	-6%	\$164,233	14%	\$158,000	36%	\$2,463,500	7%
Nāpili/Kahana/Honokōwai	244	9%	\$487,980	5%	\$438,500	6%	\$119,067,044	15%
Pukalani	6	-40%	\$631,000	12%	\$603,000	9%	\$3,786,000	-33%
Spreckelsville/Pā'ia/Ku'au	4	300%	\$369,000	4%	\$373,500	6%	\$1,476,000	317%
Wailea/Mākena	216	53%	\$1,533,203	-10%	\$1,184,950	3%	\$331,171,895	39%
Wailuku	168	26%	\$402,194	6%	\$439,375	8%	\$67,568,602	33%
<b>Maui Summary</b>	<b>1,654</b>	<b>14%</b>	<b>\$724,412</b>	<b>6%</b>	<b>\$500,000</b>	<b>12%</b>	<b>\$1,198,177,331</b>	<b>21%</b>

SOURCE: REALTORS ASSOCIATION OF MAUI, MLS SALE DATA.

3.2.10

**LAND SALES  
BY AREA, MAUI COUNTY, 2018**

Area	# Sales	% Change Last Yr	Average Price	% Change Last Yr	Median Price	% Change Last Yr	Total Volume	% Change Last Yr
Ha'ikū	53	61%	\$570,652	18%	\$475,000	19%	\$30,244,550	90%
Hāna	8	-11%	\$460,000	27%	\$467,500	10%	\$3,680,000	13%
Kā'anapali	10	-38%	\$645,973	-8%	\$649,500	-18%	\$6,459,731	-42%
Kahakuloa	0	-100%	\$0	0%	\$0	0%	\$0	-100%
Kahului	2	-33%	\$1,583,750	443%	\$1,583,750	403%	\$3,167,500	262%
Kapalua	0	-100%	\$0	0%	\$0	0%	\$0	-100%
Kihei	13	63%	\$698,846	16%	\$415,000	-12%	\$9,085,000	88%
Kula/Ulupalakua/ Kanaio	35	133%	\$652,201	-34%	\$650,000	40%	\$22,827,025	55%
Lahaina	11	38%	\$1,320,136	36%	\$1,500,000	61%	\$14,521,500	87%
Makawao/Olinda/ Hali'imaile	10	-29%	\$566,590	1%	\$400,000	-21%	\$5,665,900	-28%
Maui Meadows	1	-67%	\$725,000	55%	\$725,000	45%	\$725,000	-48%
Moloka'i	18	-10%	\$226,883	57%	\$205,000	55%	\$4,083,900	41%
Nāpili/Kahana/ Honokōwai	0	-100%	\$0	0%	\$0	0%	\$0	-100%
Olowalu	1	0%	\$575,000	-48%	\$575,000	-48%	\$575,000	-48%
Pukalani	5	-89%	\$383,400	16%	\$375,000	15%	\$1,917,000	-88%
Spreckelsville/ Pā'ia/Ku'au	1	0%	\$2,900,000	123%	\$2,900,000	123%	\$2,900,000	123%
Wailea/Mākena	6	20%	\$5,297,500	720%	\$5,725,000	941%	\$31,785,000	884%
Wailuku	19	-32%	\$378,912	1%	\$315,000	-2%	\$7,199,325	-32%
<b>Maui Summary</b>	<b>196</b>	<b>-11%</b>	<b>\$749,655</b>	<b>50%</b>	<b>\$480,200</b>	<b>30%</b>	<b>\$146,932,431</b>	<b>33%</b>

NA: Not available.

SOURCE: REALTORS ASSOCIATION OF MAUI, MLS SALE DATA.

### 3.2.11

## FOREST AND NATURAL AREA ACREAGE BY ISLAND

On June 30, 2017

Island	Conservation District Forest Land		Natural Areas	
	Forest Reserve <sup>1</sup>	Private Forest <sup>2</sup>	Number of Areas	Acres
<b>State Total</b>	<b>657,841</b>	<b>328,742</b>	<b>21</b>	<b>123,810</b>
Hawai'i	453,242	106,745	8	94,954
Maui	67,769	53,180	5	18,543
Kaho'olawe	0	0	0	0
Lāna'i	0	6,150	0	0
Moloka'i	11,690	0	2	2,950
O'ahu	38,966	88,817	4	2,148
Kaua'i	86,174	73,850	2	5,215
Ni'ihau	0	0	0	0

1. State-owned and privately-owned lands under surrender agreement in forest reserve system.

2. Private forest land within conservation district. The majority of these lands were previously in the forest reserve system.

SOURCE: HAWAII STATE DEPARTMENT OF LAND AND NATURAL RESOURCES, DIVISION OF FORESTRY AND WILDLIFE.